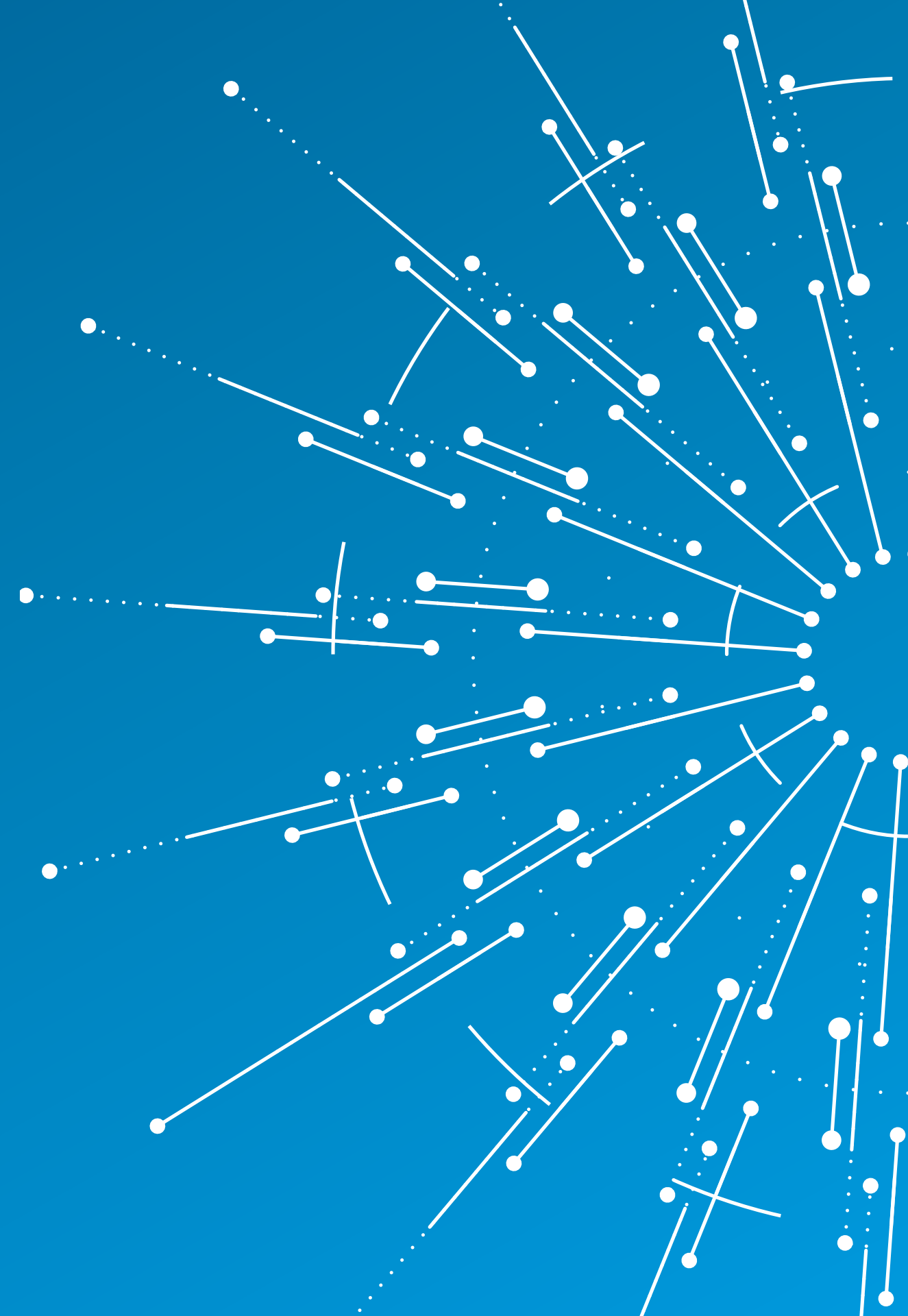




Disclaimer: Flex gives no warranty and accepts no responsibility or liability for i) errors or omissions in the content; ii) the accuracy or the completeness of the information and materials; and iii) any calculations, results or information derived from the use of any information contained in this document.

Under no circumstance will Flex be held liable in any way for any claim, damages, losses, expenses, costs or liabilities whatsoever (including, without limitation, any direct or indirect damages for loss of profits, business interruption or information) resulting or arising directly or indirectly from the use of or inability to use this document, or reliance on the information and materials on this document. Flex has exercised reasonable efforts to include accurate and up to date information.





Supply Chain Sustainability Program GHG kick-off webinar

flex.

Supplier Greenhouse Gas Emission Program

Flex has adopted greenhouse gas emissions reduction targets necessary to meet the Paris Agreement goals, limiting global warming to 1.5°C above preindustrial levels.

Flex approach



In order to support [Flex's 2030 goals](#), the supplier sustainability team launched a GHG emission reduction program with our preferred suppliers and in partnership with CDP (formerly known as the Carbon Disclosure Project) to help us achieve our GHG emission reduction goals.



*Note: To remain in the PSP, suppliers will be required to commit to have an emissions reduction target within 3 years from the approval date in the PSP.



Commitment from our CEO



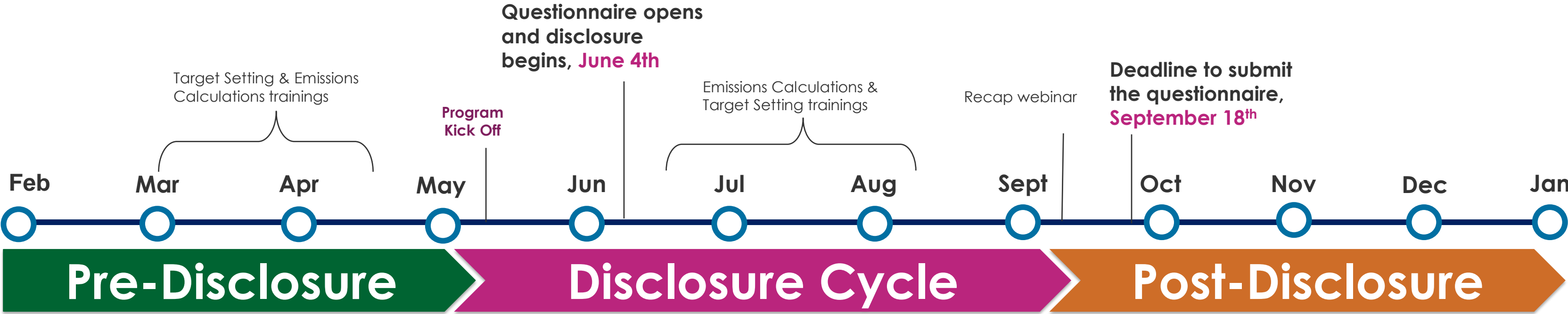
Revathi Advaiti, CEO, Flex

Sustainability, including environmental, social and corporate governance (ESG), has long been the bedrock of Flex operations. Now more than ever, it's important for us to do our part and contribute to a sustainable future.

As we aim to become the most trusted partner in manufacturing, we have a responsibility to not only deliver on our stakeholders' expectations but to do so in a sustainable manner. We are well-positioned to deepen our sustainability commitment by building on our investments and experiences of years past. To this end, we are working toward [our most ambitious goals yet with a timeline to meet them by 2030](#) and a commitment to net-zero by 2040. As we look to significantly lower emissions throughout our global operations, Flex is a proud member of the [Science Based Targets initiative](#), which aligns us to the Paris Agreement's goal to limit climate change.

Our 2030 goals also continue our focus on cultivating a safe, inclusive and respectful workplace that values the diverse backgrounds, perspectives and talents of our people, who are at the heart of our operations. Our commitments inspire us to continue holding ourselves and our partners to the highest ethical standards, act with integrity and further drive transparency and accountability.

2024 GHG Program Timeline



Flex invitation to suppliers

Supplier fill-in and submit the questionnaire
Webinars from Flex to support suppliers in their disclosure

- Discuss results with suppliers and send feedback, and hold suppliers accountable for on-going improvement
- Work with suppliers to explore collaborative opportunities
- Suppliers continue their environmental journey

Webinar dates:

- Target Setting:
AME & EU: March 12th
Asia EN: March 13th
Asia CH: March 14th

- Kick-off:
AME & EU: May 14th
Asia EN: May 15th
Asia CH: May 16th

- GHG Emissions:
1st AME & EU: April 16th
1st Asia EN: April 17th
1st Asia CH: April 18th

- Target Setting:
1st AME & EU: July 16th
1st Asia EN: July 17th
1st Asia CH: July 18th

- GHG Emissions:
2nd AME & EU: June 18th
2nd Asia EN: June 19th
2nd Asia CH: June 20th

- Recap:
AME & EU: September 3rd
Asia EN: September 4th
Asia CH: September 5th

- GHG Emissions:
3rd AME-EU: August 13th
3rd Asia EN: August 14th
3rd Asia CH: August 15th

- Personalized sessions
During all disclosure cycle



Companies included in this initiative

This program applies to [all companies](#) from all sectors, including, but not limited to:

CO2e Emissions

All companies generate emissions (e.g., by purchasing electricity or driving vehicles) and we all have improvement areas in our daily operations where we can reduce our emissions and environmental impact.



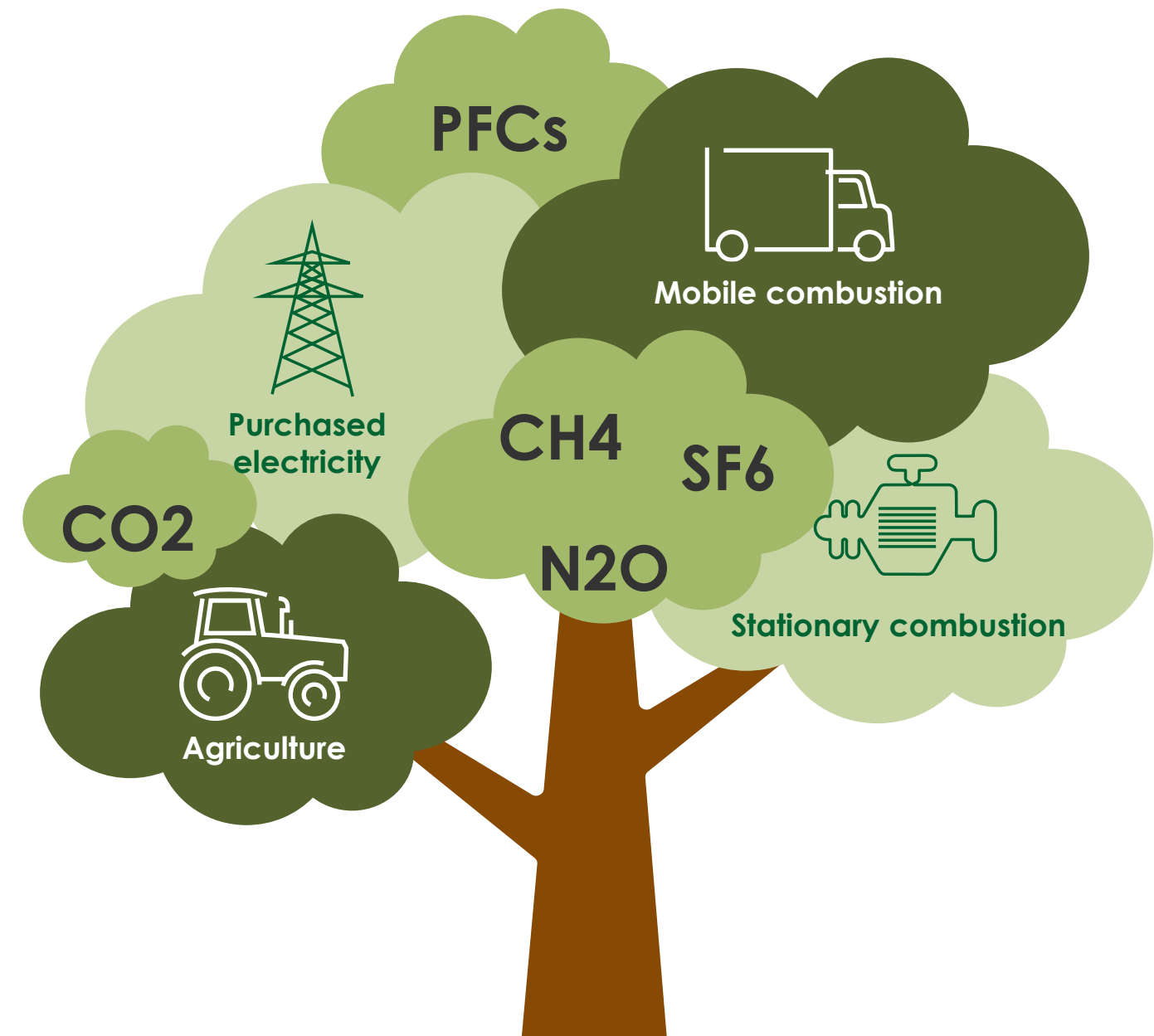
Greenhouse Gas Emissions

Greenhouse gases (GHG) are trap heat from the sun that warm the planets surface, creating a greenhouse effect and allowing life on earth.

Primary sources of GHG emissions are the burning of fossil fuels for electricity, heat and transportation; and even land-use change, or agriculture.



Some examples of greenhouse gases:



Note: All industries including manufacturers, distributors, services provides, and office-based companies have GHG emissions; so, they apply in this initiative.

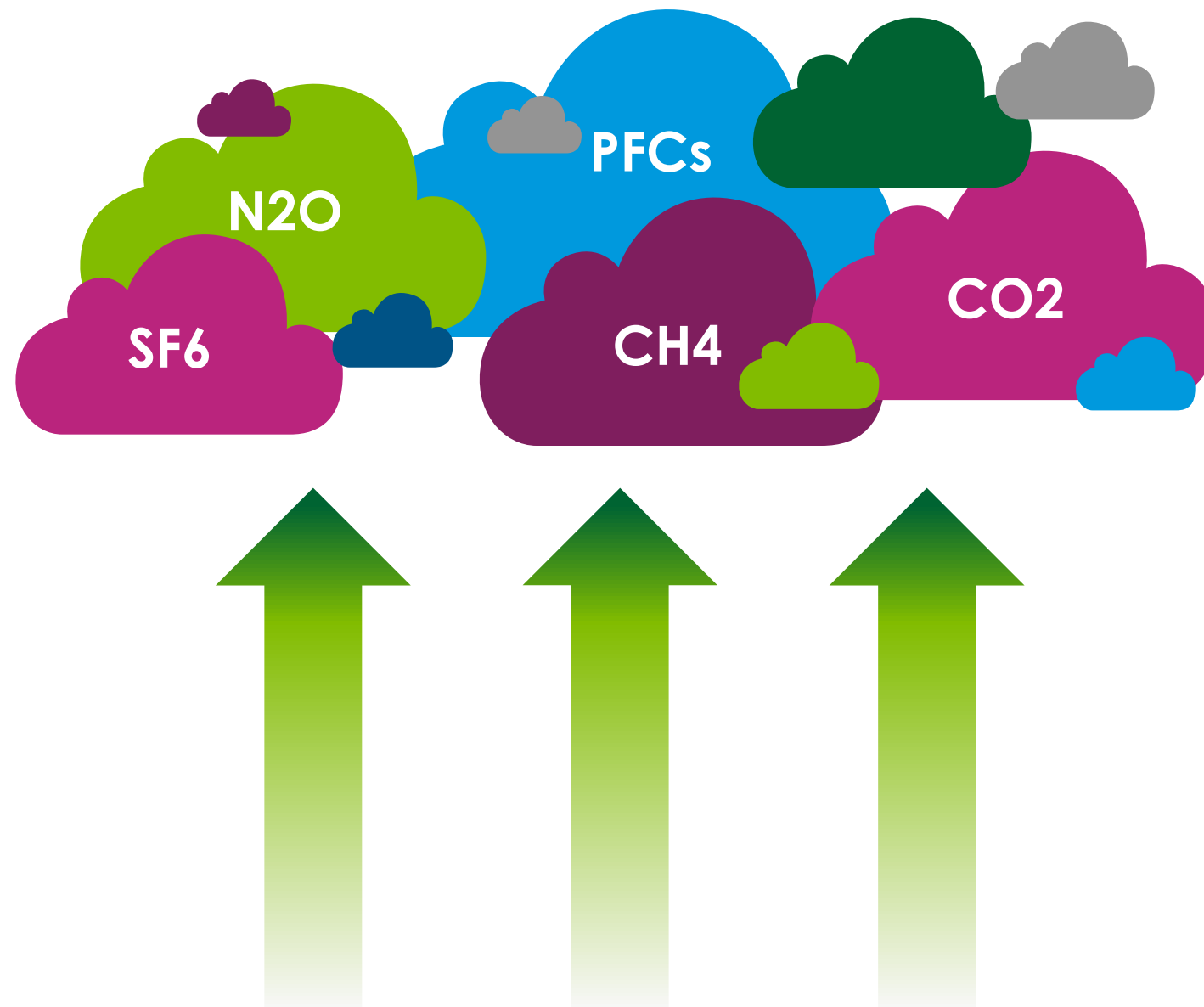
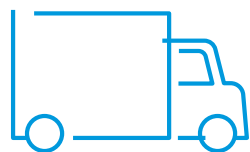


CO₂ : Carbon dioxide / SF: Sulphur hexafluoride / CH₄ : one atom of carbon and four atoms of hydrogen / N₂O: Nitrous oxide (laughing gas)

GHG Emissions Scopes

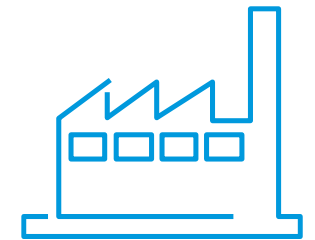
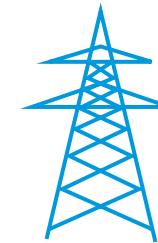
Scope 1

Direct emissions from fuel combustion and refrigerant leakage from company's owned facilities and vehicles and on-site manufacturing.



Scope 2

Indirect emissions from the purchase of electricity, steam, heat, and cooling.

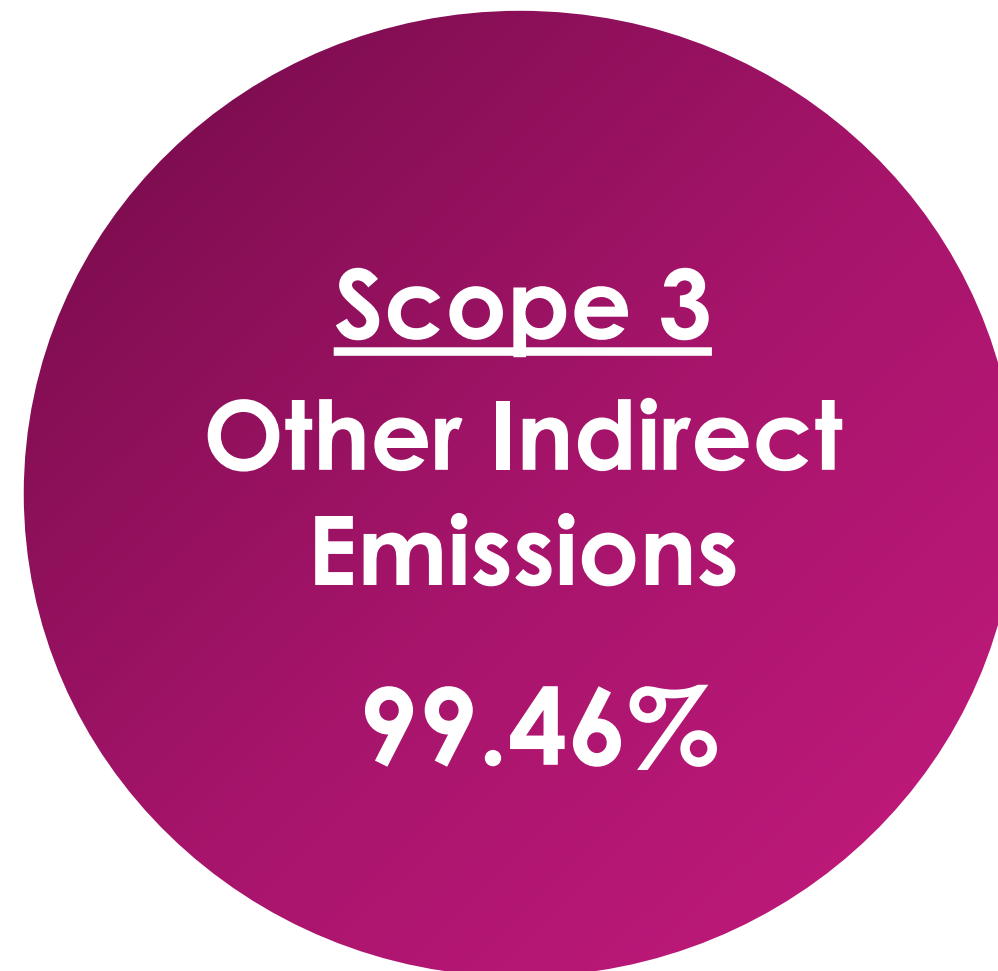
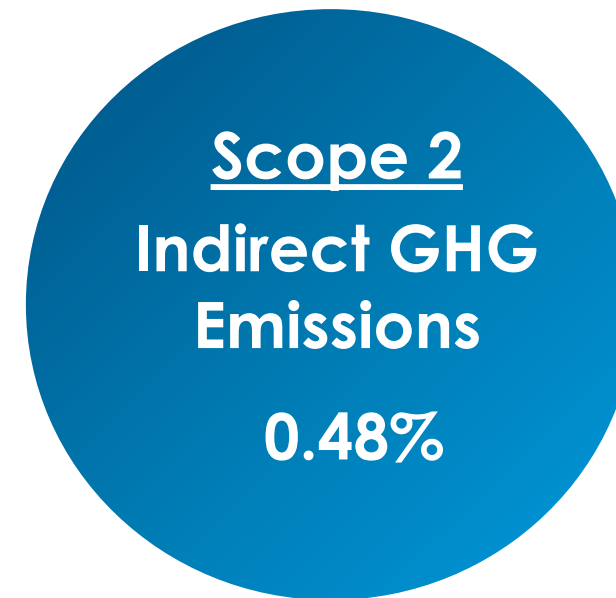


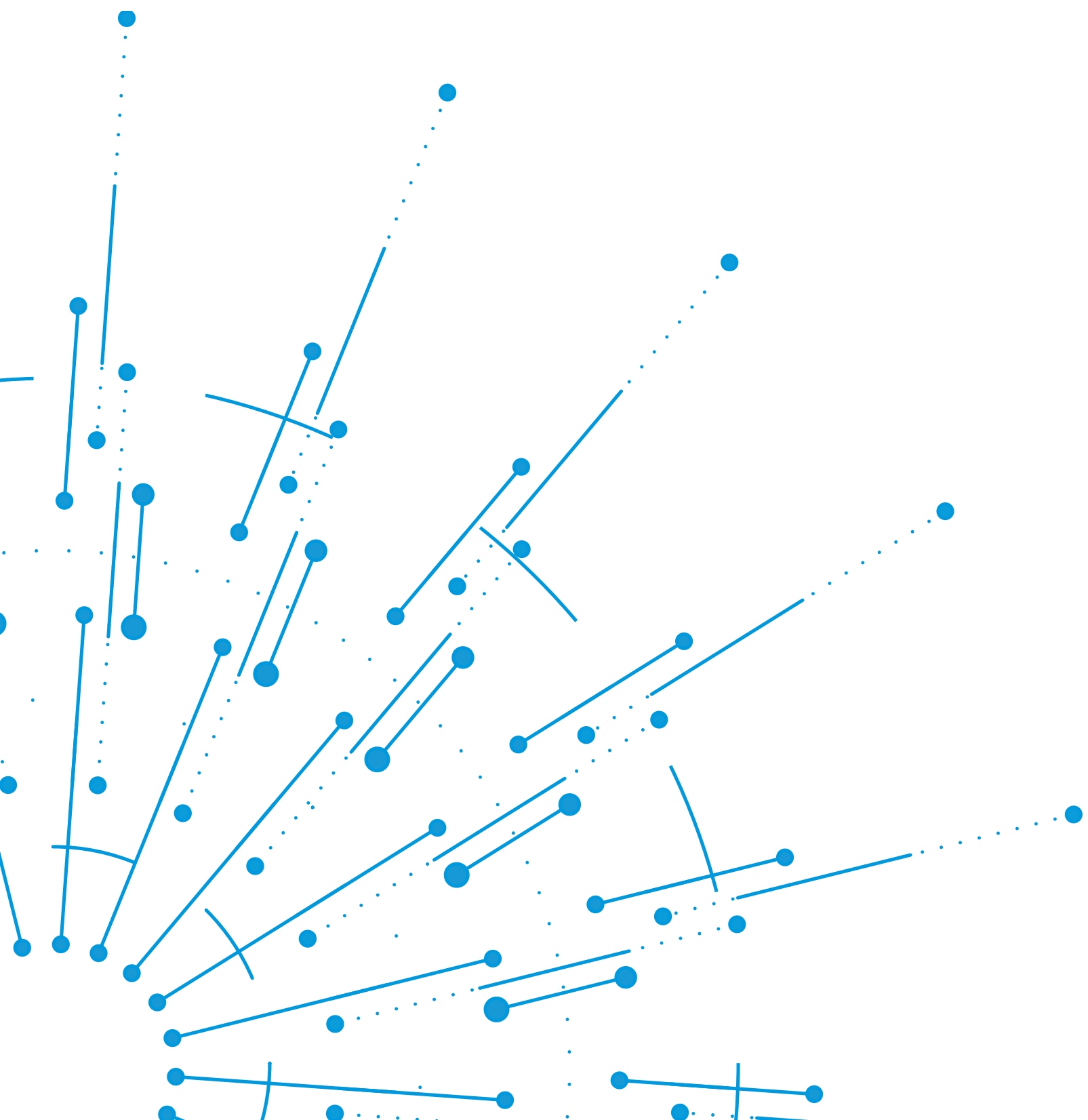
Scope 3

Indirect emissions from a company's value chain (e.g., purchased goods and services, use of sold products, suppliers).



Flex's emissions allocation



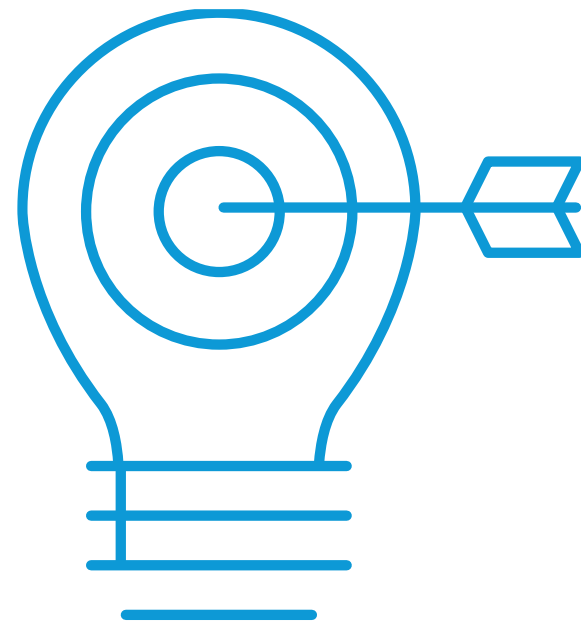


Emissions reduction targets

What is an emissions reduction target?

It's the reduction percentage that a company has defined for their Green House Gas emissions.

These targets help the organization to reach sustainability goals, these targets can impact areas such as financing, business and new opportunities such as clients.



Why do we need targets?

“Business leaders have a crucial role to play, by putting nature at the core of their processes and decision-making and systematically identifying, assessing, mitigating and disclosing nature-related risks to avoid severe consequences”

World Economic Forum , Nature risk rising why the crisis engulfing nature matters for business and the economy.

Importance of setting emissions reduction targets

These targets are the reduction percentage that a company has defined for their greenhouse gas emissions they help the organization to reach sustainability goals, and impact areas such as financing, business and new opportunities with customers



How to start identifying and setting your targets?



Elements of an emission reduction target

BASE YEAR

The year you will take as a starting point to reduce your emissions

TARGET YEAR

Year in which you aim to achieve it, the date must be higher than the current year



% OF REDUCTION

Percentage of emissions that will be reduced, this percentage is free to choose according to the scope of the provider.

EMISSION SOURCE

It can be by scopes: 1, 2 and/or 3, business units, facilities or geographies

Types of Emissions Targets

Type	Explanation	Example units
ABSOLUTE	Total quantity of greenhouse gas emissions emitted	<i>Tons CO₂e reduced</i>
INTENSITY	Compares the emissions to some <u>unit of economic output</u>	$\frac{\text{Tons CO}_2\text{e}}{\text{Revenue / product}}$ <i>reduced</i>

Examples of Emissions Targets

Absolute Target:

- Flex commits to reduce absolute scope 1 and 2 GHG emissions 50% by 2030 from a 2019 base year.

Intensity Target:

- Flex commits to reduce company-wide Scope 1+2(location-based) CO2e emissions by at least 10% normalized to revenue by 2020 from a 2016 base year.

• Emission source

• % Reduction

• Target year

• Base year



In order to have a structured target, the following elements are required in your disclosure:

Absolute target:

1. Scope(s)
2. Covered emissions in base year (metric ton CO₂e)
3. Target year
4. Targeted reduction % from base year
5. Target Status

Intensity target:

1. Scope(s)
2. Intensity Metric
3. Intensity Figure in base year
4. Intensity Figure in reporting year
5. Target year
6. Target reduction %
7. Target Status

Flex Excel GHG Emissions Tool

(C4.1) Did you have an emissions target that was active in the reporting year? (C4.1) 在此报告年中，您是否有有效的排放目标？				
Types of targets: 减排目标的类型	ABSOLUTE: Total quantity of greenhouse gas emissions emitted 绝对目标: 温室气体排放总量	Units example: Tons CO ₂ e reduced	减少的二氧化碳当量排放吨数	
	INTENSITY: Compares the emissions to some unit of economic output 强度目标: 排放量和某种经济产出进行对比	Units example: $\frac{\text{Tons CO}_2\text{e}}{\text{Revenue / product}}$ reduced	减少的 $\frac{\text{二氧化碳当量排放吨数}}{\text{营业额/产品数量}}$	
Question (Mandatory questions are marked with an asterisk *)		Your answer	Notes 注释	Location in the CDP questionnaire CDP问卷中的位置
ABSOLUTE TARGET 绝对目标	Scope(s) of your target* 范围*	Scope 1 范围一		(C4.1a) Provide details of your absolute emissions target(s) and progress made against those targets. (C4.1a) 请提供您的绝对排放目标和针对这些目标的进展的详情。
	Base Year 绝对目标	2020	The year you will take as a starting point to reduce your emissions. 您设定的作为废气减排起点的年份，作为对比减排目标的参照年份	
	Is your base year the same year you reported in the "Env Tab" of this file?	Yes 是		
	Covered emissions in base year (Metric ton CO ₂ e)* 所有选定范围中目标覆盖的基准年排放 (公吨CO ₂ e) *	297.96	If you answered "Yes" in the previous columns and filled the env template tab it will autopopulate.	
	Target year* 强度目标*	2025	Year in which you aim to achieve it, the date must be higher than the current year. 您设定的目标达成的年份	
	Targeted reduction % from base year* 基准年减排百分比 *	50.00	% of reduction (0-100) 百分比字段[输入0-100的百分比，最多保留2位小数]	
	Target Status in reporting year* 报告年的目标状态 *	Underway 正在进行	Select the option that applies from the dropdown list 请从下方下拉菜单选项中选择	
Data to provide INTENSITY TARGET 强度目标	Scope(s) of your target* 范围*	Scope 2 范围二		(C4.1b) Provide details of your emissions intensity target(s) and progress made against those target(s). (C4.1b) 请提供您的排放强度目标和针对这些目标的进展的详情。
	Base Year 绝对目标	2020	The year you will take as a starting point to reduce your emissions. 您设定的作为废气减排起点的年份，作为对比减排目标的参照年份	
	Is your base year the same year you reported in the "Env Tab" of this file?	Yes 是		
	Intensity Metric* 强度指标*	Metric ton CO ₂ e / Revenue in USD	Please write the units used; it is usually units of CO ₂ e/revenue or another unit of business activity 请您写公吨CO ₂ e/单位活动	
	Insert your business activity metric from your base year (matching the denominator units of the "Intensity Metric" row; i.e. USD revenue, tons of product, kWh, etc).	5,768.00		
	Intensity figure in base year for all selected Scopes (metric tons CO ₂ e per unit of activity) *	0.003292912	If you answered "Yes" in the previous columns and filled the env template tab it will autopopulate. Otherwise divide the	



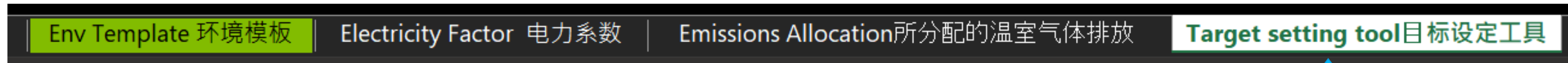
2024 GHG Emissions Template- V1.3



GHG Emissions Target Tool

To guide you on how to set your GHG Emissions target, once you have input your monthly information on the **Env Template 环境模板** tab, please go to **the Target setting tool 目标设定工具** tab. At the top of the tab, you will find a quick definition and units of each of the 2 types of targets.

Flex is asking you to set at least one GHG emissions reduction target, you can choose to set an Absolute target, an Intensity target or both.



Types of targets: 目标类型:		
Types of targets: 目标类型:	ABSOLUTE: Total quantity of greenhouse gas emissions emitted 绝对目标: 温室气体排放总量	Units example: <i>Tons CO₂e reduced</i> 减少的二氧化碳当量排放吨数 单位示例:
	INTENSITY: Compares the emissions to some unit of economic output 强度目标: 排放量和某种经济产出进行对比	Units example: $\frac{Tons\ CO_2e}{Revenue / product} reduced$ 减少的 $\frac{二氧化碳当量排放吨数}{营业额 / 产品数量}$ 单位示例:

Absolute target

An absolute target is a target that specifies the total quantity of greenhouse gas emissions emitted that a company is set to reduce. On **rows 5-11** you will input the information for your absolute target on **column G**, please note that the fields that have an asterisk (*) on **column C** are mandatory information.

Mandatory questions are marked with an asterisk * 标*问题为必答		Question 问题	Type of answer 回复类别	Your answer 您的回答	Notes 注释	Location in the CDP questionnaire CDP问卷中的位置
ABSOLUTE TARGET 绝对目标	*	Scope(s) of your target 目标范围	[Drop down list] [下拉选项]	Scope 2 范围二		(C4.1a) Provide details of your absolute emissions target(s) and progress made against those targets. (C4.1a) 请提供您的绝对排放目标和针对这些目标的进展的详情。
		Base Year 基准年	[numerical] [数字]		The year you will take as a starting point to reduce your emissions . 您设定的作为废气减排起点的年份，作为对比减排目标的参照年份	
		Is your base year the same year you reported in the "Env Tab" of this file? 您的基准年和您在本文件中Env	[Yes 是 / No 无]		.	
	*	Covered emissions in base year 在基准年覆盖的排放量			If you answered "Yes" in the previous row and filled the env template tab it will autopopulate. Otherwise please provide this information. 如果您在前一行中回答"是"并填写env模板选项卡，它将自动填写。否则，请提供此信息。	
	*	Target year 目标年	[numerical] [数字]		Year in which you aim to achieve it, the date must be higher than the current year. 您设定的目标达成的年份	
	*	Targeted reduction % from base year 与基准年相比目标减少%	[numerical] [数字]		% of reduction (0-100) 百分比字段[输入0-100的百分比，最多保留2位小数]	
	*	Target Status 目标状态	[Drop down list] [下拉选项]		Select the option that applies from the dropdown list 请从下方下拉菜单选项中选择	



Absolute target

1) First you will select from the dropdown list the scope of your target, please select either: **Scope 1 范围一**, **Scope 2 范围二**, or **Scope 1 & 2 范围一和二**.

Questions are marked with an asterisk *	Question 问题	Type of answer 回复类别	Your answer 您的回答
*	Scope(s) of your target 目标范围	[Drop down list] [下拉选项]	Scope 2 范围二
	Base Year 基准年	[numerical] [数字]	Scope 1 范围一 Scope 2 范围二 Scope 1 & 2 范围一和二



*	Scope(s) of your target 目标范围	[Drop down list] [下拉选项]	Scope 2 范围二
	Base Year 基准年	[numerical] [数字]	2022
	Is your base year the same year you reported in the "Env Tab" of this file? 您的基准年和您在本文件中Env	[Yes 是 / No 无]	Yes 是
			Yes 是 No 无

2) Next, please write the “**Base Year 基准年**” of your target, and in the next row from the dropdown list you will select either **Yes 是** or **No 无**, depending if your **Base Year** is the same the same year of the information your reported in the **Env Template 环境模板** tab of this file.

If you select **Yes**, the information Will autopopulate from what you disclosed, iff you select **No**, you Will have to input this

Absolute target

3) If you select **Yes**, in the previous row the information will autopopulate in the "**Covered emissions in base year 在基准年覆盖的排放量**" row with the emissions data you disclosed in the **Env Template 环境模板** tab of the file. If you select **No**, you will have to input this information manually



	Is your base year the same year you reported in the "Env Tab" of this file? 您的基准年和您在本文件中Env	[Yes 是 / No 无]	Yes 是
*	Covered emissions in base year 在基准年覆盖的排放量	[Calculated] [计算]	14.34

	Is your base year the same year you reported in the "Env Tab" of this file? 您的基准年和您在本文件中Env	[Yes 是 / No 无]	No 无
*	Covered emissions in base year 在基准年覆盖的排放量	[numerical] [数字]	Please input your covered emissions here

*	Target year 目标年	[numerical] [数字]	2025
---	--------------------	---------------------	------

4) In the "**Target year 目标年**" row you will input the year in which you plan to achieve your target

Absolute target

5) Then you will input manually the percentage you want to reduce your emissions in the "**Targeted reduction % from base year 与基准年相比目标减少%**" row

*	Targeted reduction % from base year 与基准年相比目标减少%	[numerical] [数字]	50.00
---	--	---------------------	-------

Please note that Flex is not asking you to set any minimum percentage for your target.

*	Target Status 目标状态	[Drop down list] [下拉选项]	Underway 正在进行
			New 全新 Underway 正在进行 Achieved 完成 Expired 已过期 Revised 修改 Replaced 已更换

6) In the "**Target Status 目标状态**", please select from the dropdown list the status that your target has.

Location in the CDP questionnaire CDP问卷中的位置
(C4.1a) Provide details of your absolute emissions target(s) and progress made against those targets. (C4.1a) 请提供您的绝对排放目标和针对这些目标的进展的详情。

7) Finally, all the information provided in the previous steps must be answered on the specified section of the CDP questionnaire as specified in **column I**

Intensity target

An intensity target defines the emissions to be reduced by comparing the emissions to some unit of economic output (E.g., revenue, sales, units produced, tons of product, etc.). On **rows 13-27** you will input the information for your intensity target on **column G**, please note that the fields that have an asterisk (*) on **column C** are mandatory information.

		B	C	D	E	F	G	H
INTENSITY TARGET 强度目标	General info 总论	*	Scope(s) of your target 目标范围	[Drop down list] [下拉选项]				
		*	Target year 目标年	[numerical] [数字]				
		*	Targeted reduction % from base year 与基准年相比目标减少%	[numerical] [数字]				% of reduction (0-100) 百分比字段[输入0-100的百分比, 最多保留2位小数]
		*	Target Status 目标状态	[Drop down list] [下拉选项]				Select the option that applies from the dropdown list 请从下方下拉菜单选项中选择
	BASE YEAR 基准年		Base Year 基准年	[numerical] [数字]				The year you will take as a starting point to reduce your emissions. 您设定的作为废气减排起点的年份, 作为对比减排目标的参照年份
			Is your base year the same year you reported in the "Env Tab" of this file? 您的基准年和您在本文件Env	[Yes 是 / No 无]				
		*	Covered emissions in base year 在基准年覆盖的排放量					If you answered "Yes" in the previous row and filled the env template tab it will autopopulate. Otherwise please provide this information. 如果您在前一行中回答“是”并填写env模板选项卡, 它将自动填写。否则, 请提供此信息。
		*	Intensity Metric 强度度量	[text -open field] [开放性文本]				Please write the units used; it is usually units of CO2e/revenue or another unit of business activity 请您写公吨CO2e/单位活动
		*	Business activity metric from your base year (as established in the denominator of the "Intensity Metric" row)	[numerical] [数字]				
		*	Intensity figure in base year 基准年的强度数据					Covered emissions in reporting year / Business activity metric in reporting year 所覆盖的报告年度排放量 / 报告年度的业务活动指标
	REPORTING YEAR 报告年		Reporting Year 报告年	[numerical] [数字]				
			Is your reporting year the same year you reported in the "Env Tab" of this file?	[Yes 是 / No 无]				
			Emissions in reporting year 在报告年覆盖的排放量				Please input your intensity figure here	If you answered "Yes" in the previous row and filled the env template tab it will autopopulate. Otherwise please provide this information. 如果您在前一行中回答“是”并填写env模板选项卡, 它将自动填写。否则, 请提供此信息。
		*	Business activity metric from your reporting year (as established in the denominator of the "Intensity Metric" row)	[numerical] [数字]				
*		Intensity figure in reporting year					Covered emissions in reporting year / Business activity metric in reporting year	

Intensity targets – General info 总论

1) First you fill the general information of your target, the same way as it was explained on the Absolute targets:

- **Scope(s) of your target**
- **Target year**
- **Targeted reduction % from base year**
- **Target status**

Note these are all mandatory fields that have an asterisk on **column C**

General info 总论	*	Scope(s) of your target 目标范围	[Drop down list] [下拉选项]	Scope 2 范围二	
	*	Target year 目标年	[numerical] [数字]	2025	
	*	Targeted reduction % from base year 与基准年相比目标减少%	[numerical] [数字]	50.00	% of 百分
	*	Target Status 目标状态	[Drop down list] [下拉选项]	Underway 正在进行	Sele 人
					New 全新 Underway 正在进行 Achieved 完成 Expired 已过期 Revised 修改 Replaced 已更换

Intensity target – Base Year 基准年

2) After you fill the general information, you then proceed to fill the information of the **Base year**:

- First input the “**Base Year 基准年**”, for this example we will define 2021
- Similar as with the absolute target, you need to select [**Yes 是 / No 无**] in the next row depending if the information you disclosed in the **Env Template 环境模板** tab of the file corresponds to the “**Base Year 基准年**” of your target
- If you select **Yes**, in the previous row the information will auto populate in the “**Covered emissions in base year 在基准年覆盖的排放量**” row with the emissions data you disclosed in the **Env Template 环境模板** tab of the file. If you select **No**, you will have to input this information manually

R 基准年	Base Year 基准年	[numerical] [数字]	2021
	Is your base year the same year you reported in the "Env Tab" of this file? 您的基准年和您在本文件Env	[Yes 是 / No 无]	No 无
	* Covered emissions in base year 在基准年覆盖的排放量	[numerical] [数字]	Please input your base year emissions here



R 基准年	Base Year 基准年	[numerical] [数字]	2021
	Is your base year the same year you reported in the "Env Tab" of this file? 您的基准年和您在本文件Env	[Yes 是 / No 无]	No 无
	* Covered emissions in base year 在基准年覆盖的排放量	[numerical] [数字]	16.50

Intensity target – Base Year 基准年

- d) In the “**Intensity Metric 强度度量**” row you need to manually input the units of the economic activity you are comparing your emissions to in the target. In this example we are writing “**Revenue (USD)**”
- e) In the next row you will manually input the number that corresponds to this business activity. For this example, that we selected revenue, this hypothetical company has an annual revenue of \$20'000,000 USD so that is the number we input in that row
- f) In the last row for base year, you need to divide the “**Covered emissions in base year 在基准年覆盖的排放量**” divided by the “**Business activity metric...**” row, and this will be our “**Intensity figure in base year 基准年的强度数据**” (If you selected “Yes” in **row 18** this calculation will be done automatically)

BASE YEAR 基准年	*	Covered emissions in base year 在基准年覆盖的排放量	[numerical] [数字]	16.50
	*	Intensity Metric 强度度量	[text -open field] 开放性文本	Revenue (USD)
	*	Business activity metric from your base year (as established in the denominator of the "Intensity Metric" row)	[numerical] [数字]	20,000,000.00
	*	Intensity figure in base year 基准年的强度数据	[numerical] [数字]	=G19/G21

Intensity target – Reporting year 报告年

3) The last data set we need to fill for our intensity target is the **Reporting year 报告年**, the information you need to input in these rows is similar to the information required for the **Base Year 基准年** rows. For this example:

- a) The “**Reporting Year 报告年**” 2022
- b) We selected that “**Yes 是**”, 2022 is the same year as the information we reported on the **Env Template 环境模板** tab of the file
- c) As we selected “Yes” in the previous row, our “**Covered emissions in base year 在基准年覆盖的排放量**” will fill automatically

REPORTING YEAR 报告年	Reporting Year 报告年	[numerical] [数字]	2022
	Is your reporting year the same year you reported in the "Env Tab" of this file?	[Yes 是 / No 无]	Yes 是
	Emissions in reporting year 在报告年覆盖的排放量	[Calculated 计算]	14.34
	Business activity metric from your reporting year (as established in the denominator of the "Intensity Metric" row)	[numerical] [数字]	22,000,000.00
	* Intensity figure in reporting year 报告年度的强度数据	[Calculated 计算]	0.000000652

Intensity target – Reporting year 报告年

- d) We input manually our “**Business activity metric from your reporting year**” in the same units as we did for our **Base year**
- e) As we selected “Yes” on **row 24**, our “**Intensity figure in reporting year 报告年度的强度数据**” will be calculated automatically (If you selected “No” in **row 24** this calculation would be done manually)

REPORTING YEAR 报告年	Reporting Year 报告年	[numerical] [数字]	2022
	Is your reporting year the same year you reported in the "Env Tab" of this file?	[Yes 是 / No 无]	Yes 是
	Emissions in reporting year 在报告年覆盖的排放量	[Calculated 计算]	14.34
	Business activity metric from your reporting year (as established in the denominator of the "Intensity Metric" row)	[numerical] [数字]	22,000,000.00
	* Intensity figure in reporting year 报告年度的强度数据	[Calculated 计算]	0.000000652

4) Finally, all the information provided in the previous steps must be answered on the specified section of the CDP questionnaire as specified in **column I**

Location in the CDP questionnaire
CDP问卷中的位置

(C4.1b) Provide details of your emissions intensity target(s) and progress made against those target(s).

(C4.1b) 请提供您的排放强度目标和针对这些目标的进展的详情。



Responsible Business Alliance
Advancing Sustainability Globally



Target Question

2023 Question #

2024 Question #

RBA EMT Section

MS Forms section

1 **GHG Emissions reduction target(s)**

C4.1.1, C4.1.2

**7.53.1 and / or
7.53.2**

[Targets]

**[Section 3: GHG Emissions
Reduction Targets]**

2 Renewable energy target

C4.2.1

7.54.1

NA

[Section 5: Renewable Energy
Targets]

3 Emissions reduction initiatives

C4.3

**7.55, 7.55.1,
7.55.2**

[Emissions
initiatives]

[Section 6: Sustainability
initiatives]

4 Methodology for emissions
calculations

C5.3

7.2

[Company
information]

[Section 2: GHG Emissions Data]

5 Base year information

C5.1, C5.2

7.5

[Company
information]

[Section 3: GHG Emissions
Reduction Targets]

6 Scope 1 emissions

C6.1

7.6

[Scope 1]

[Section 2: GHG Emissions Data]

7 Scope 2 Methodology (LB / MB)

C6.2

7.3

[Scope 2]

[Section 2: GHG Emissions Data]

8 Scope 2 Emissions

C6.3

7.7

[Scope 2]

[Section 2: GHG Emissions Data]

9 Scope 3 emissions (optional)

C6.5

7.8

[Scope 3]

[Section 2: GHG Emissions Data]

10 Renewable & Non renewable energy
consumption and usage totals

C8.2a, C8.2b

**7.30, 7.30.1,
7.30.6, 7.30.7**

[Energy reporting]

[Section 4: Energy Data]

11 GHG Emissions allocation

SC1.1, SC1.2

7.26

NA

[Section 7: Emissions Allocation]

Target Questions: Greenhouse Gas Emissions Data & Energy Usage



Scope 1 – Greenhouse gases that your company emits



Company Facilities



Company Vehicles

Scope 2 – Greenhouse gases that others emit due to your energy use



Purchased electricity, steam, heating & cooling, for own use

Scope 3 – Everything else



Supplier emissions



Product use



Employee commuting

Target Questions: Greenhouse Gas Emissions Data



Reporting emissions is **best practice** and a pre-requisite to understanding and reducing negative environmental impacts.

▼Target Questions: Emissions methodology

- ▼ Provide your base year and base year emissions (scopes 1 and 2).
- ▼ Select the name of the standard, protocol, or methodology you have used to collect activity data and calculate scope 1 and scope 2 emissions.

▼Target Questions: Emissions data

- ▼Scope 1 and scope 2 GHG emissions
- ▼Account for your scope 3 GHG emissions
- ▼Provided an emissions intensity figure

Target Questions: Targets and Performance



Target setting provides direction and structure to environmental strategy. Providing information on quantitative targets and qualitative goals, and progress made against these targets, can demonstrate your organization's commitment to improving climate-related issues management at a corporate level. It also **helps Flex understand your ambition levels for reducing your greenhouse gas emissions in the future.**

▼Target Questions: Emissions targets

- ▼ Details on GHG emissions targets (absolute and/or intensity)

▼Target Questions: Other climate-related targets

- ▼ Provide details of your target(s) to increase low-carbon energy consumption or production including renewable energy targets
- ▼ Provide details of any other climate-related targets

▼Target Questions: Emissions reduction initiatives

- ▼Details on GHG emissions reduction initiatives

Target Questions:

Greenhouse Gas Emissions Allocation & Energy Usage



Emissions located in the supply chain are around four times as high as those from direct operations.

Allocating your emissions provides further context to buyers regarding the procedures adopted and/or actions taken by their suppliers.

▼Target Questions: Energy

- ▼ Report which energy-related activities your organization has undertaken and the consumption that comes from renewable sources
- ▼ Report energy consumption accounted for at a zero or near-zero emission factor in the market-based Scope 2

▼Target Questions: Supply chain

- ▼ Allocate emissions to Flex, describe challenges, and reporting capabilities
- ▼ Select the name of the standard, protocol, or methodology you have used to collect activity data and calculate scope 1 and scope 2 emissions.

Your responses to the Supply Chain module are visible only to Flex regardless of whether you elect to make your CDP response private or public



Target Questions: Allocating your emissions to your customers



Allocate based on the proportion of total revenue represented by Flex

Formula for allocating emissions to Flex based on revenue

$$\text{Allocated GHG Emissions} = \frac{\text{Revenue of products/services purchased by Flex}}{\text{Total revenue of products/services produced}} \times \text{Total GHG Emissions for Scope 1 or Scope 2}$$

Working example of allocating emissions to Flex based on revenue

$$250 \text{ metric tons of CO}_2\text{e allocated to Flex} = \frac{\text{US\$500,000 revenue from Flex}}{\text{US\$200,000,000 total revenue}} \times 100,000 \text{ tons of CO}_2\text{e (Company-wide Scope 1 GHG emissions)}$$

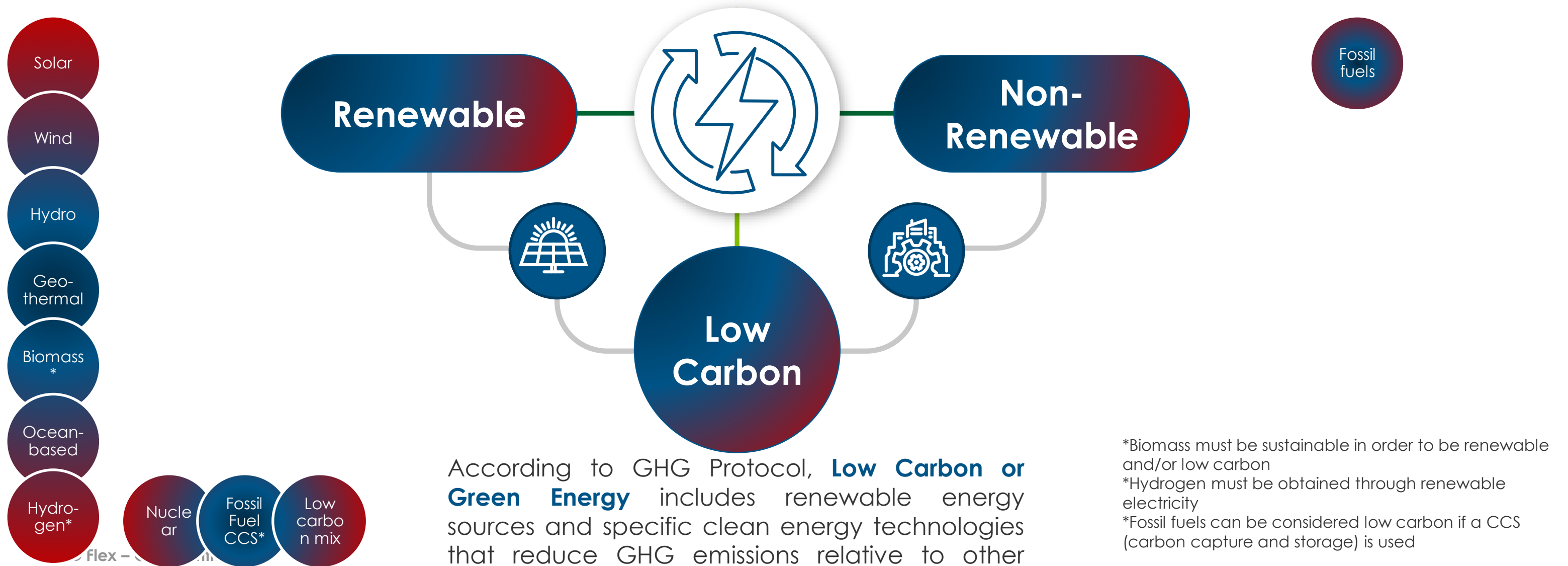
Renewable Energy Targets

Energy sources

Renewable, non-renewable and low carbon energy.

According to GHG Protocol, **renewable energy** are fuels and energy obtained from sources that are ultimately replenished from natural solar and gravitational energy flows.

Non-renewable energy are fuels and energy obtained from sources that will not be replenished in our lifetime.



According to GHG Protocol, **Low Carbon or Green Energy** includes renewable energy sources and specific clean energy technologies that reduce GHG emissions relative to other sources of energy.

*Biomass must be sustainable in order to be renewable and/or low carbon
 *Hydrogen must be obtained through renewable electricity
 *Fossil fuels can be considered low carbon if a CCS (carbon capture and storage) is used

Energy carriers

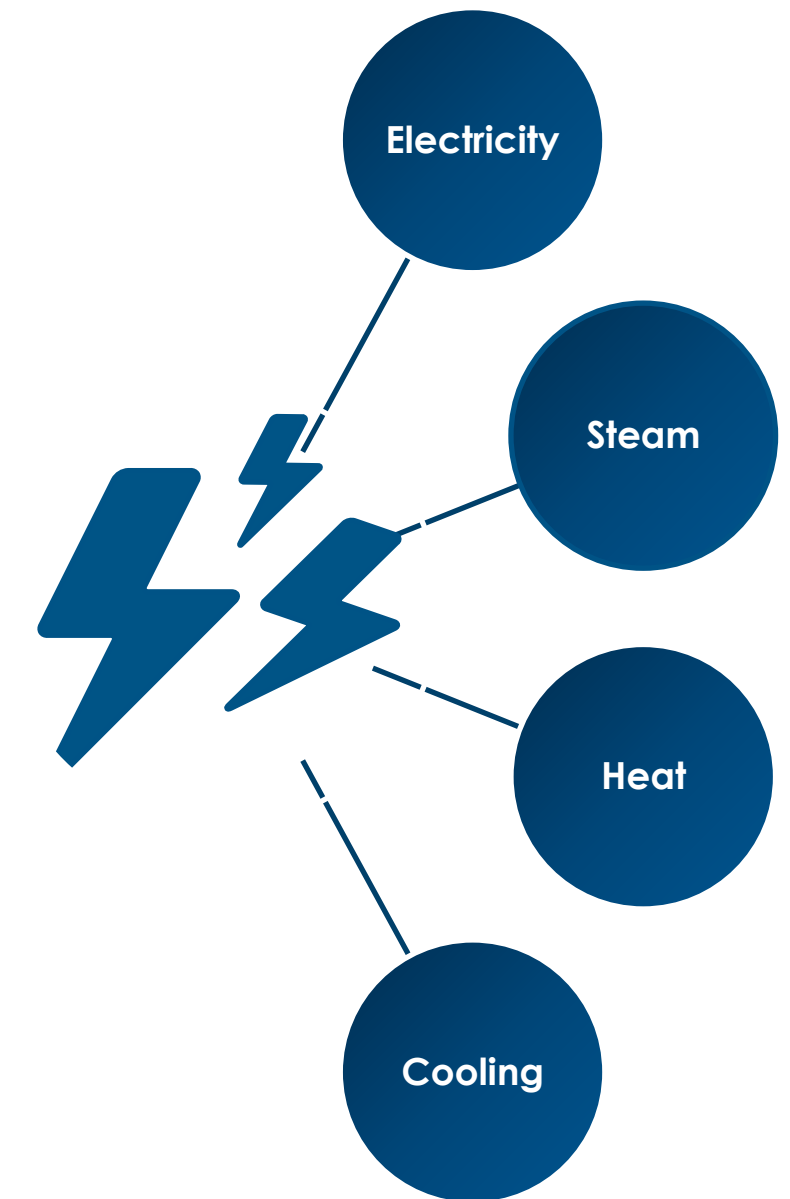
Renewable energy targets in CDP

An energy carrier is defined as a **transmitter of energy**, these occupy intermediate steps in the energy supply chain between primary sources and end-use applications.

Each energy-conversion step in the supply chain creates **energy losses and carbon emissions**.

Carriers are the secondary energy, meanwhile **resources are the primary energy**, such as, oil, natural gas, biomass, hydro, radiation, etc.

An end-use application will gather the processes in which the secondary energy (carriers) will be used, such as manufacturing, transportation, industrial services, etc.



Energy carriers considered for CDPs RE Targets. **flex**

Energy target (C4.2a)

In question C4.2a CDP will request an **energy target**, regarding low carbon and/or renewable energy.



This target could be aligned to an emission reduction target or initiative, such as RE100 or SBTi.

A single organization can have **more than 1 energy target** due to a change in coverage, energy carrier, target amount and year.

*All energy carriers must be selected

Renewable energy target

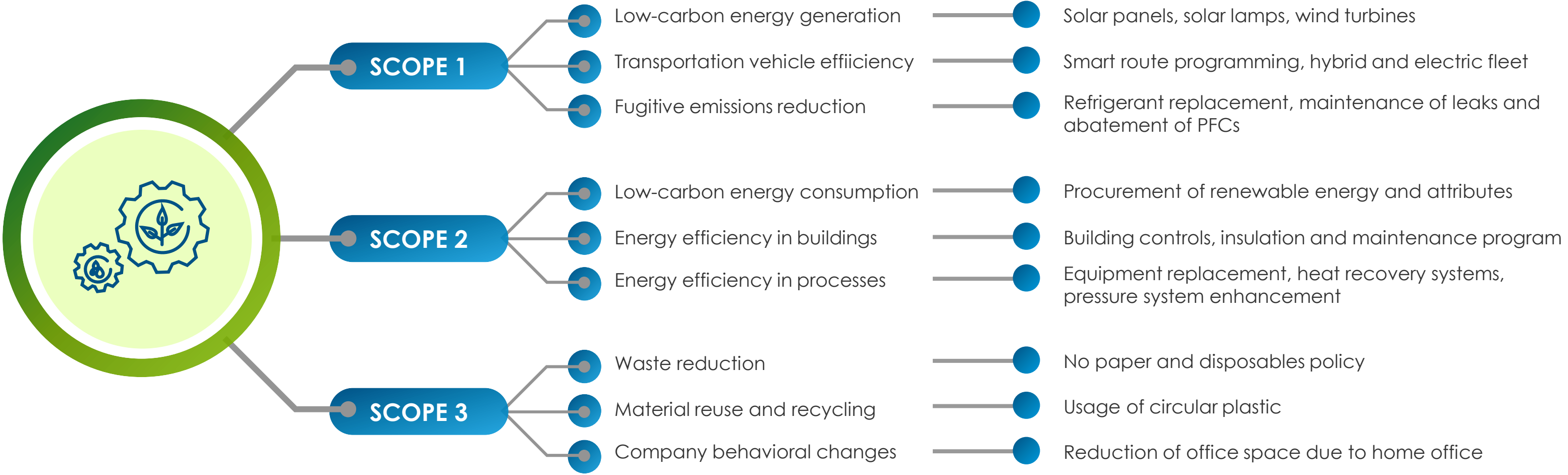
Example

CDP analyzes your data in order to consider the maturity and validity of your target, this is an example of a complete input data.

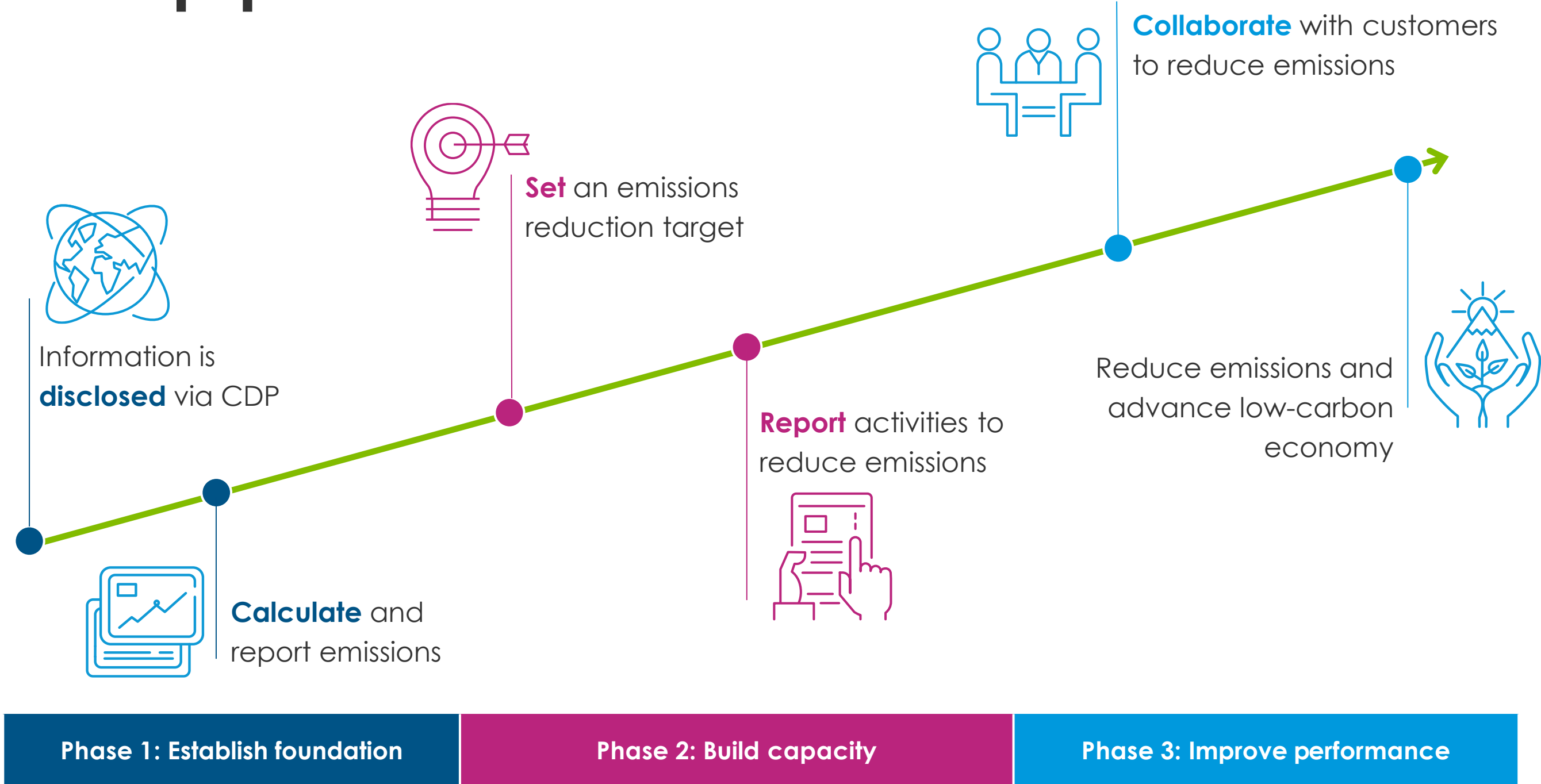
CDP Valid RE Target

- 1 **Year target was set:** 2020
- 2 **Target coverage:** China
- 3 **Energy carrier:** All energy carriers
- 4 **Activity:** Consumption
- 5 **Source:** Renewable energy
- 6 **Base year data:** 2019 (year), 0MWh (RE consumption), 0% (RE Share)
- 7 **Target year data:** 2030 (year), 350,00MWh (RE consumption), 100% (RE Share)

Greenhouse gas emission reduction activities



Road map process





FAQs and Resources

Frequently asked questions

Emission Reduction Targets

- **Is there a target Flex is asking from suppliers?**

No, there is no base target, suppliers are free to set their own targets.

- **How many targets should I set?**

There is no limit, suppliers can choose as many targets as possible.

- **What if I do not want to publicly disclose some information on the questionnaire?**

Suppliers can choose to disclose Public or Non-Public, if Non-Public is chosen only Flex will have access to the information.

Supply Chain (SC) section of the questionnaire is always treated as Non-Public Information.

- **If we have multiple sites, multiple business entities across the world do we have to roll the data up to the overall parent company or keep results at a local site level?**

Best practice in corporate GHG accounting encourages all companies to be reporting enterprise-data at the ultimate parent company level. Doing so avoids double counting and reduces reporting effort. For your CDP questionnaire, please provide as much company-wide data and information as you have available.



GHG supplier awards & recognitions

AWARDS



- 🌐 GHG & RE achieved structured targets
- 🌐 RE allocated to Flex
- 🌐 GHG emissions reduced, allocated to Flex
- 🌐 Most ambitious GHG & RE reduction targets

RECOGNITIONS



- 🌐 1st & 2nd runner-up suppliers from awards
- 🌐 Webinar attendance (completed training program)

Awards will be granted to a small and a large company of each commodity, for all the categories mentioned above.

Calculation tools

Here you can find some recommended files for further information and to assist you in your GHG emission calculations and Renewable energy calculations:



2024 GHG emissions tool
V1.4.0.xlsx



GHG Emissions tool
2024 - Quick
guide.pdf

Disclaimer: Flex gives no warranty and accepts no responsibility or liability for i) errors or omissions in the content; ii) the accuracy or the completeness of the information and materials; and iii) any calculations, results or information derived from the use of any information contained in this document. Under no circumstance will Flex be held liable in any way for any claim, damages, losses, expenses, costs or liabilities whatsoever (including, without limitation, any direct or indirect damages for loss of profits, business interruption or information) resulting or arising directly or indirectly from the use of or inability to use this document, or reliance on the information and materials on this document. Flex has exercised reasonable efforts to include accurate and up to date information

Further useful resources

Resources for Disclosure:

- ▼ [CDP Guidance for Companies](#)
- ▼ [FAQs – Find answers to common queries](#)
- ▼ [CDP Supply Chain Report: Changing the Chain](#)
- ▼ [CDP-ACS: Guidance for Company Classification](#)
- ▼ [Working 9-5: A guide for Small Office Based Organizations'](#)
- ▼ [Hot Climate, Cool Commerce: A Service Sector Guide to Greenhouse Gas Management](#)
- ▼ [On-Demand Technical Support:](#)
 - If you're based in Japan, contact japan@cdp.net
 - If you're based in a different Asian country, contact asia@cdp.net
 - If you're based in Southeast Asia, contact sea@cdp.net
 - If you're base in Latin America, contact reporteCDPLA@cdp.net

For all other geographic regions, contact <https://casemgmt-crm.cdp.net/>

GHG Emissions Accounting and Science-Based Targets:

- ▼ [GHG Protocol Corporate Standard](#)
- ▼ [GHG Protocol Calculation Tools](#)
- ▼ [CDP Technical Note on Science-Based Targets](#)
- ▼ [FAQs- The Science Based Targets Initiative](#)

[Flex's Supply Chain Resource Webpage](#)

If you require support from Flex, please send us an email to:

- ✓ [Flex GPSC Sustainability](#)
- ✓ Contact your GCM



If you require support from Flex,
please send us an email to:

- ✓ [Flex GPSC Sustainability](mailto:flex.gpsc@flex.com) (flex.gpsc@flex.com)
- ✓ Contact your GCM

Please help us improve by answering a **quick survey**
that will launch after the webinar

Supplier training survey:



flex[®]

Thank you

