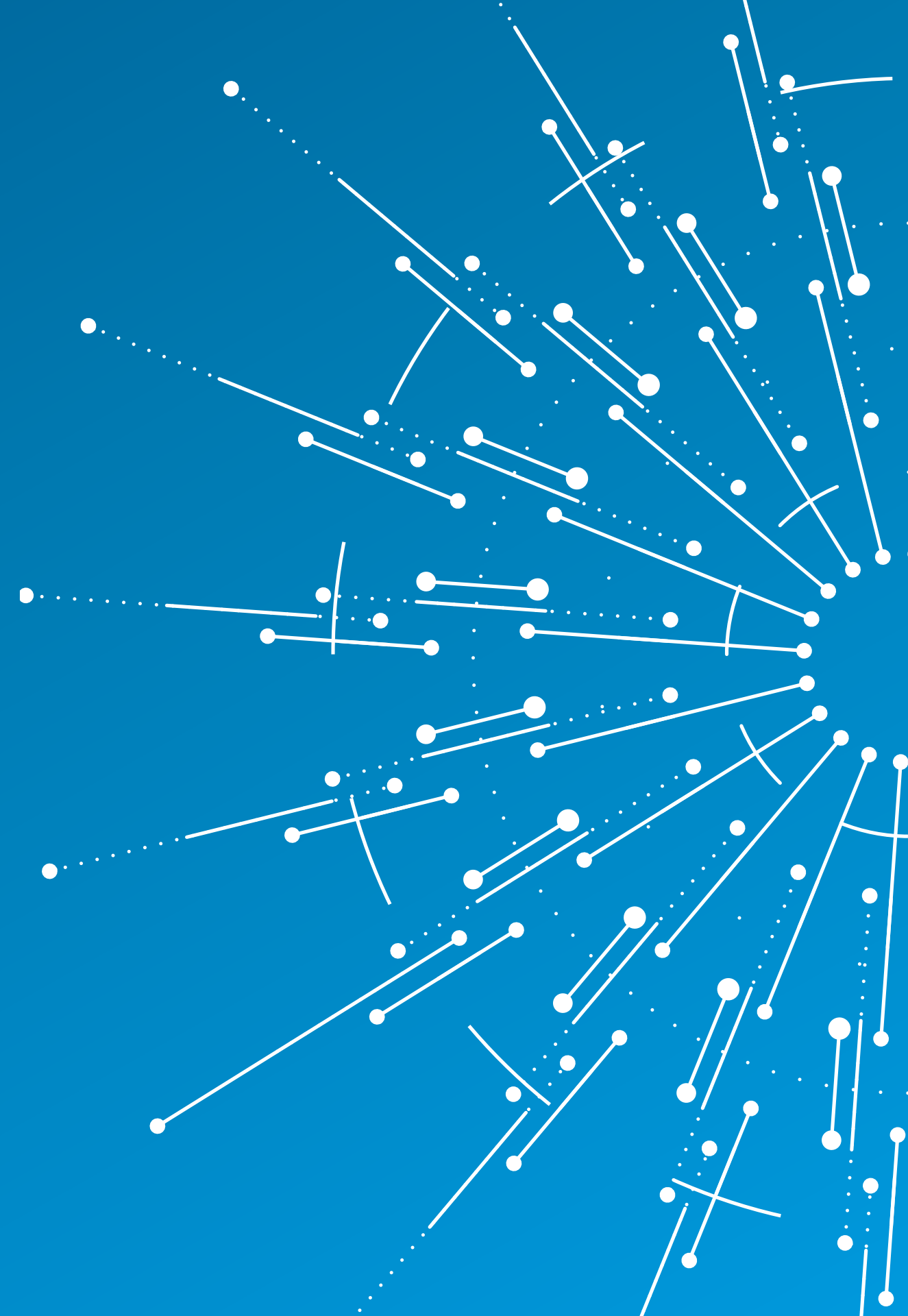


The logo for 'flex' is written in a lowercase, white, sans-serif font. The 'x' has a distinctive design with a gap in the middle. A registered trademark symbol (®) is located at the top right of the 'x'.

flex®

**Disclaimer: Flex gives no warranty and accepts no responsibility or liability for i) errors or omissions in the content; ii) the accuracy or the completeness of the information and materials; and iii) any calculations, results or information derived from the use of any information contained in this document.**

**Under no circumstance will Flex be held liable in any way for any claim, damages, losses, expenses, costs or liabilities whatsoever (including, without limitation, any direct or indirect damages for loss of profits, business interruption or information) resulting or arising directly or indirectly from the use of or inability to use this document, or reliance on the information and materials on this document. Flex has exercised reasonable efforts to include accurate and up to date information.**







# Supply Chain Sustainability Program GHG kick-off webinar

flex.



# Honored Guests



**Vincent Cellard**

**VP, Procurement**



**David Gessler**

**VP, Mechanical  
Management**



**Jon Lee**

**VP, Electrical  
Management**

# Supplier Greenhouse Gas Emission Program

Flex has adopted greenhouse gas emissions reduction targets necessary to meet the Paris Agreement goals, limiting global warming to 1.5°C above preindustrial levels.

## Flex approach



In order to support [Flex's 2030 goals](#), the supplier sustainability team launched a GHG emission reduction program with our preferred suppliers and in partnership with CDP (formerly known as the Carbon Disclosure Project) to help us achieve our GHG emission reduction goals.



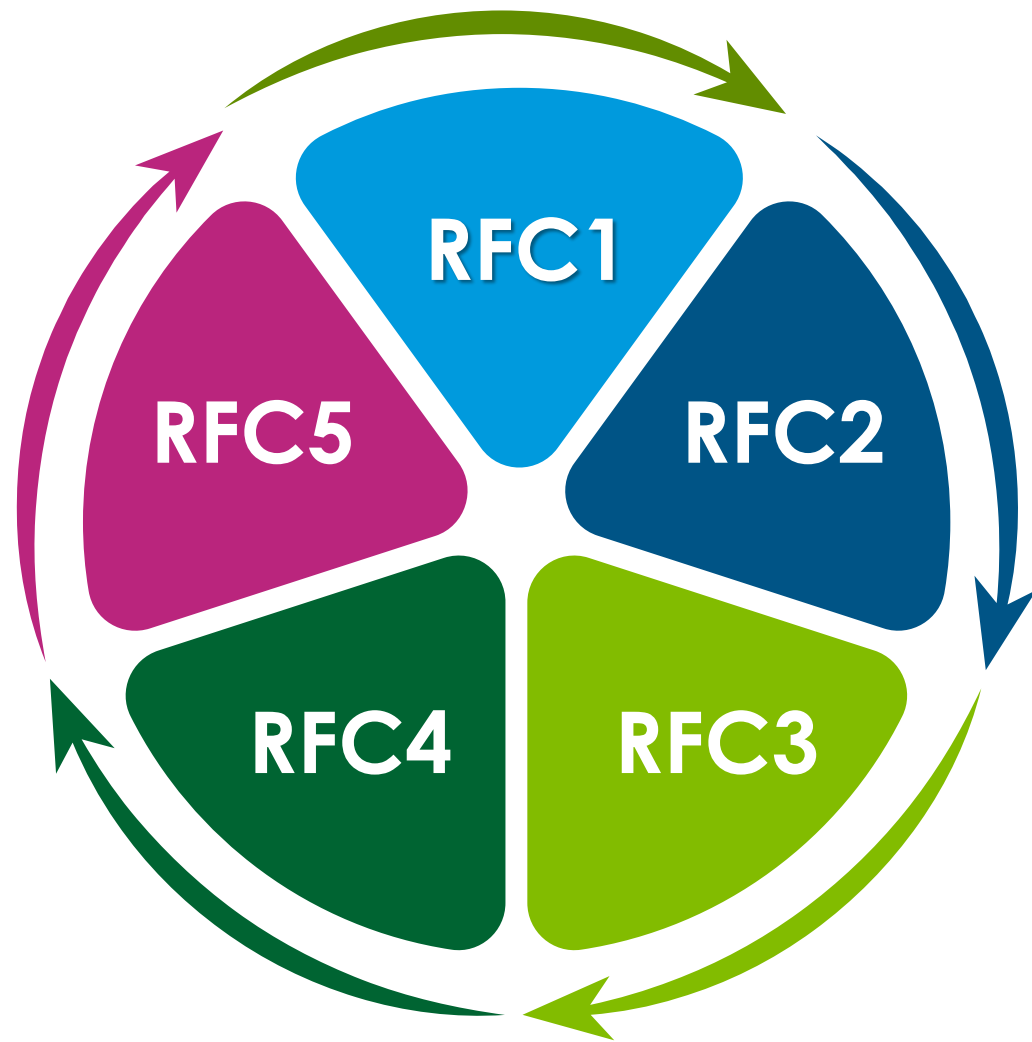
\*Note: To remain in the PSP, suppliers will be required to commit to have an emissions reduction target within 3 years from the approval date in the PSP.





# Reasons for Concern

Risk level transitions for climate change at 1.5°C



## RFC1 Unique and threatened systems

- Arctic sea-ice dependent ecosystems
- Unsects projected to lose 50% of geographic range
- Reduced habitability of small islands
- Increased endemic species extinction

## RFC2 Extreme weather events

- Increase in fluvial flood
- Soil moisture droughts
- Agricultural and ecological droughts
- Crop failure
- Malnutrition and risk of disease

## RFC3 Distribution of impacts

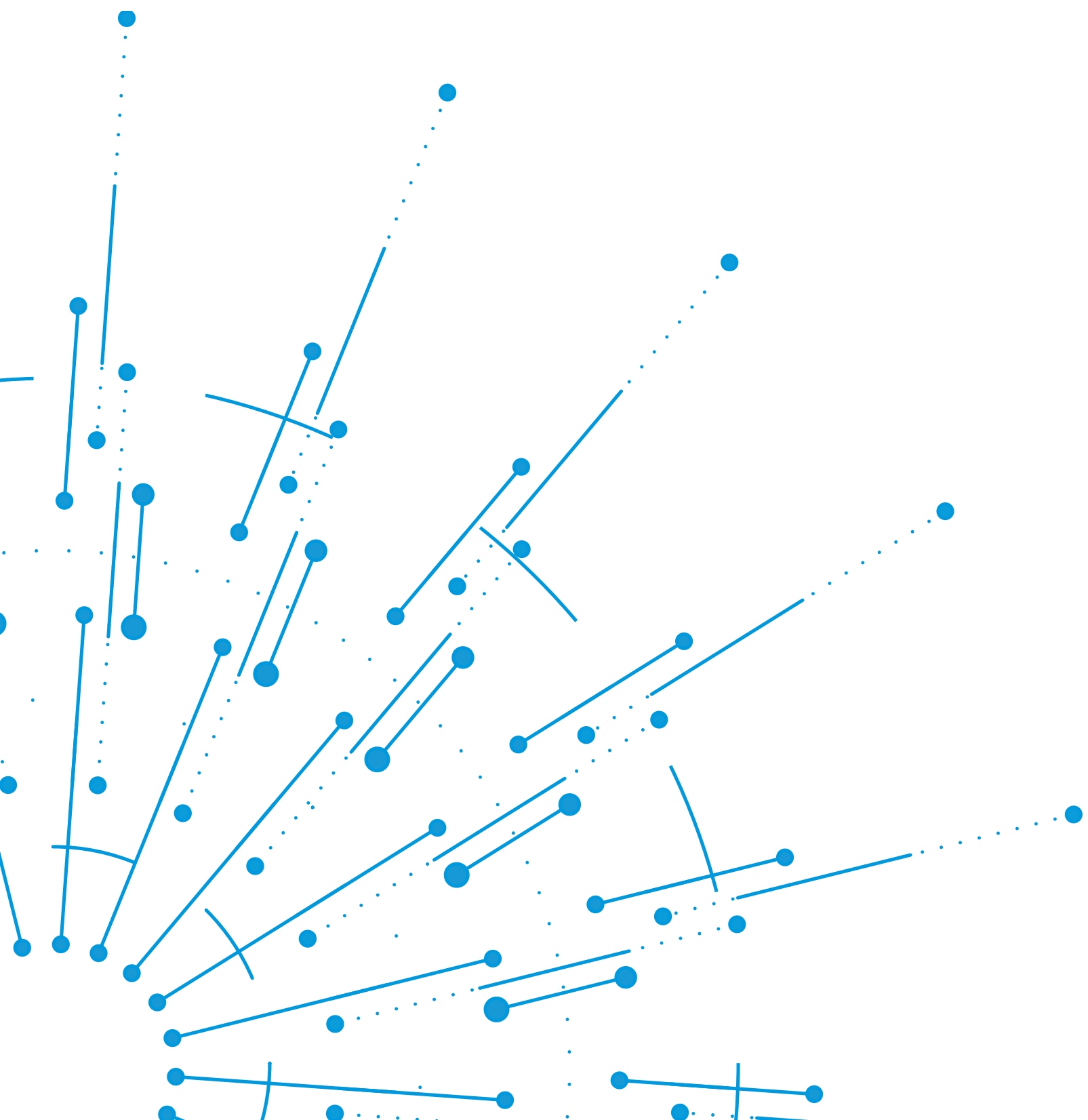
- Crop failure in maize up to 40%
- Flood risk in Asia and Africa
- High risk of mortality and morbidity due to Heat extreme and infectious diseases

## RFC4 Global aggregate impacts

- 10% decrease in effective labor
- 24% exposure global flooding
- Reduced marine food provisioning
- Decline in oceane animal biomass

## RFC5 Large-scale singular events

- Sea level rise yp to 3.1 m
- Risk of savannisation of the Amazon



# Greenhouse Gas Emissions

CLIMATE CHANGE:

EARTH'S

GIANT

GAME

OF

TETRIS



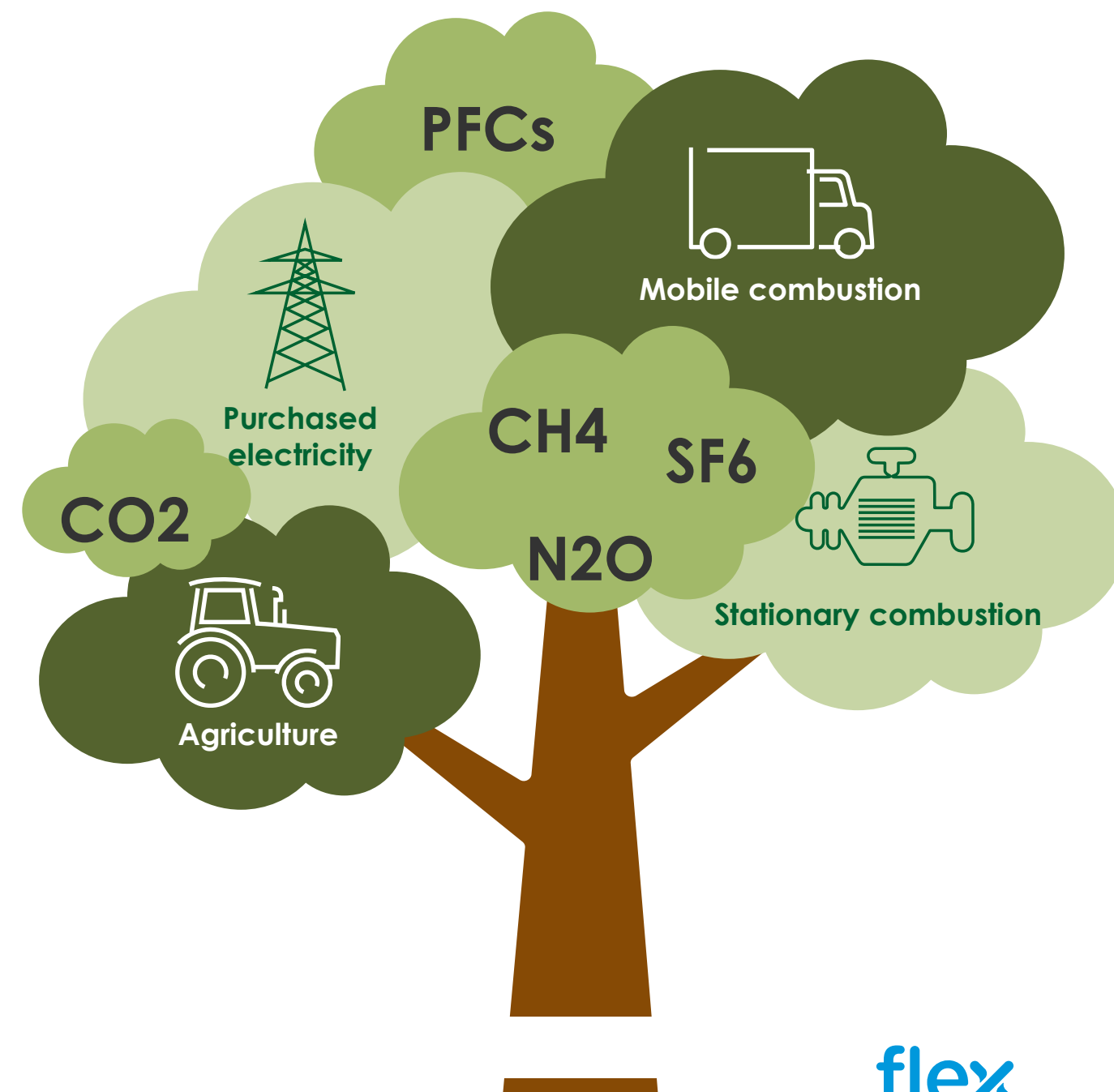
# Greenhouse Gas Emissions

**Greenhouse gases (GHG)** are trap heat from the sun that warm the planets surface, creating a greenhouse effect and allowing life on earth.

**Primary sources** of GHG emissions are the burning of fossil fuels for electricity, heat and transportation; and even land-use change, or agriculture.



Some examples of greenhouse gases:

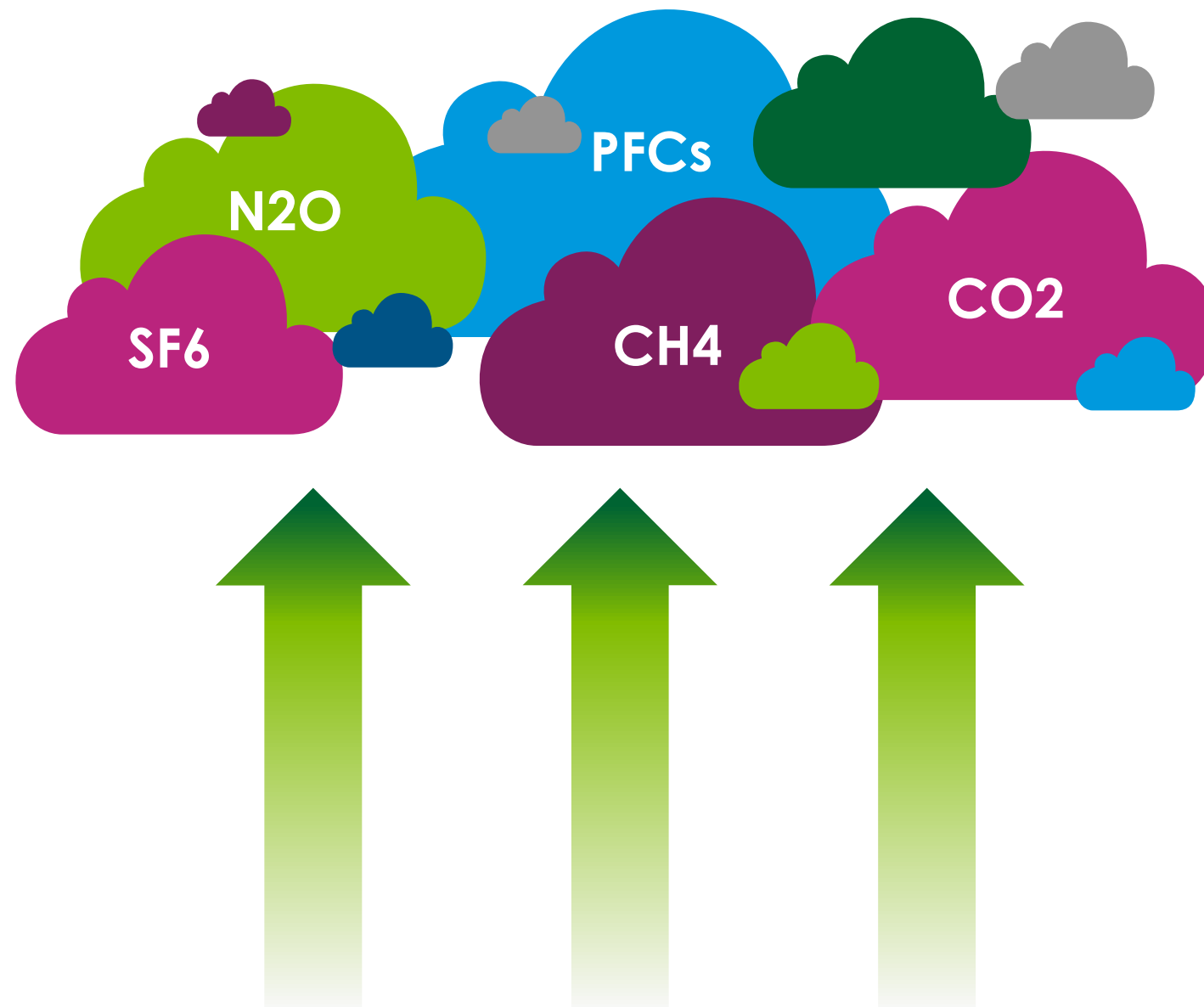
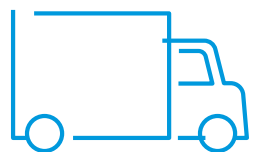




# GHG Emissions Scopes

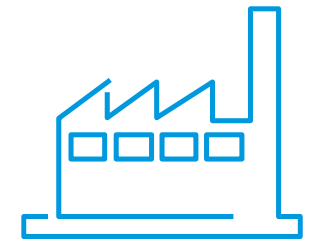
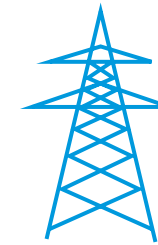
## Scope 1

**Direct emissions** from fuel combustion and refrigerant leakage from company's owned facilities and vehicles and on-site manufacturing.



## Scope 2

**Indirect emissions** from the purchase of electricity, steam, heat, and cooling.

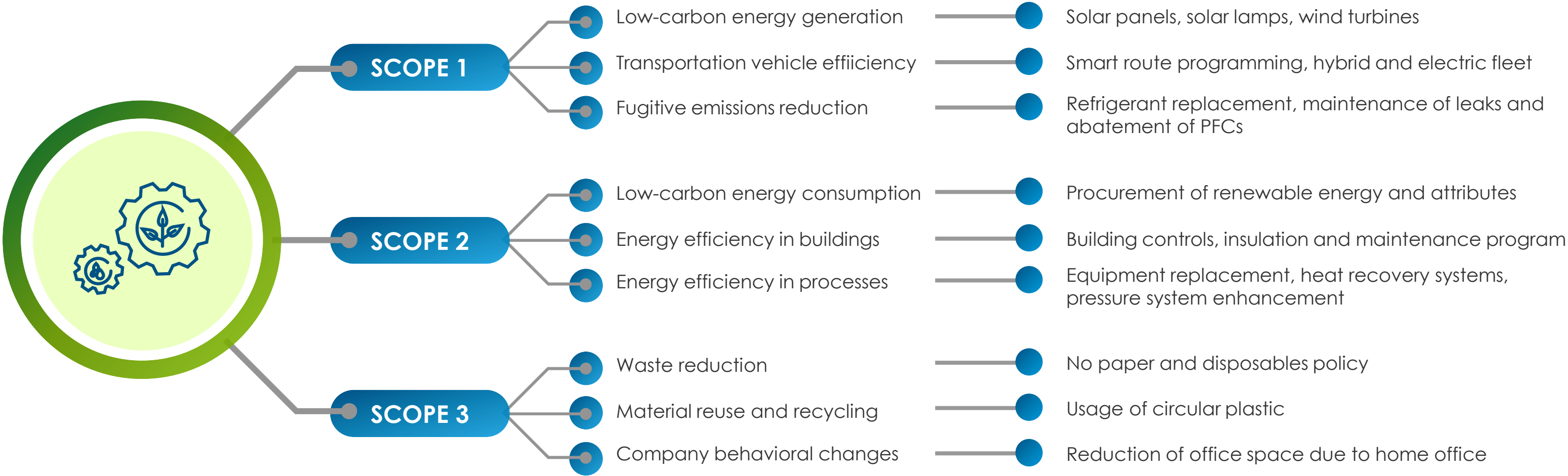


## Scope 3

**Indirect emissions** from a company's value chain (e.g., purchased goods and services, use of sold products, suppliers).



# Greenhouse gas emission reduction activities



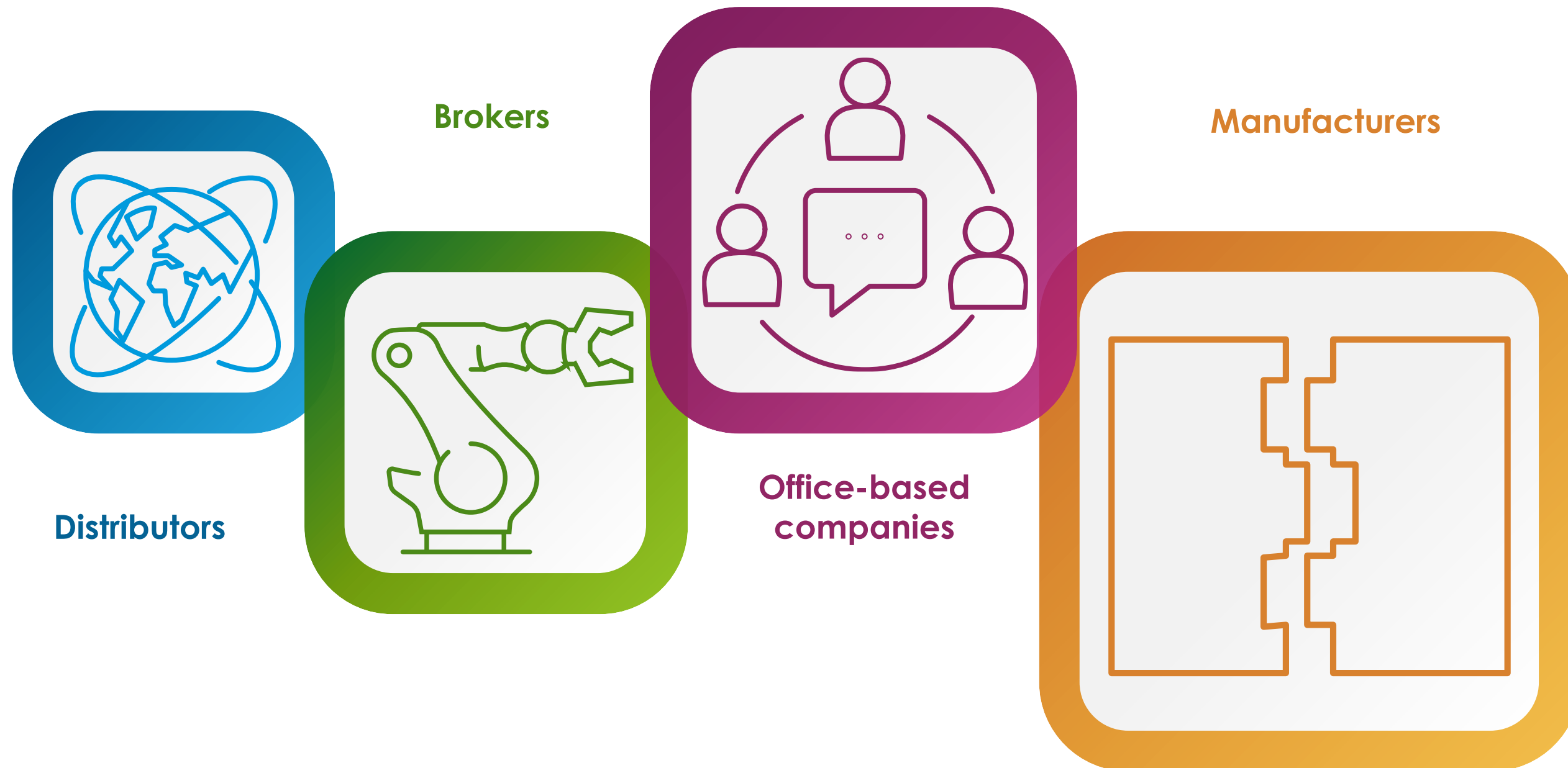
**Scope 1**  
Direct GHG Emissions  
0.06%

**Scope 2**  
Indirect GHG Emissions  
0.48%

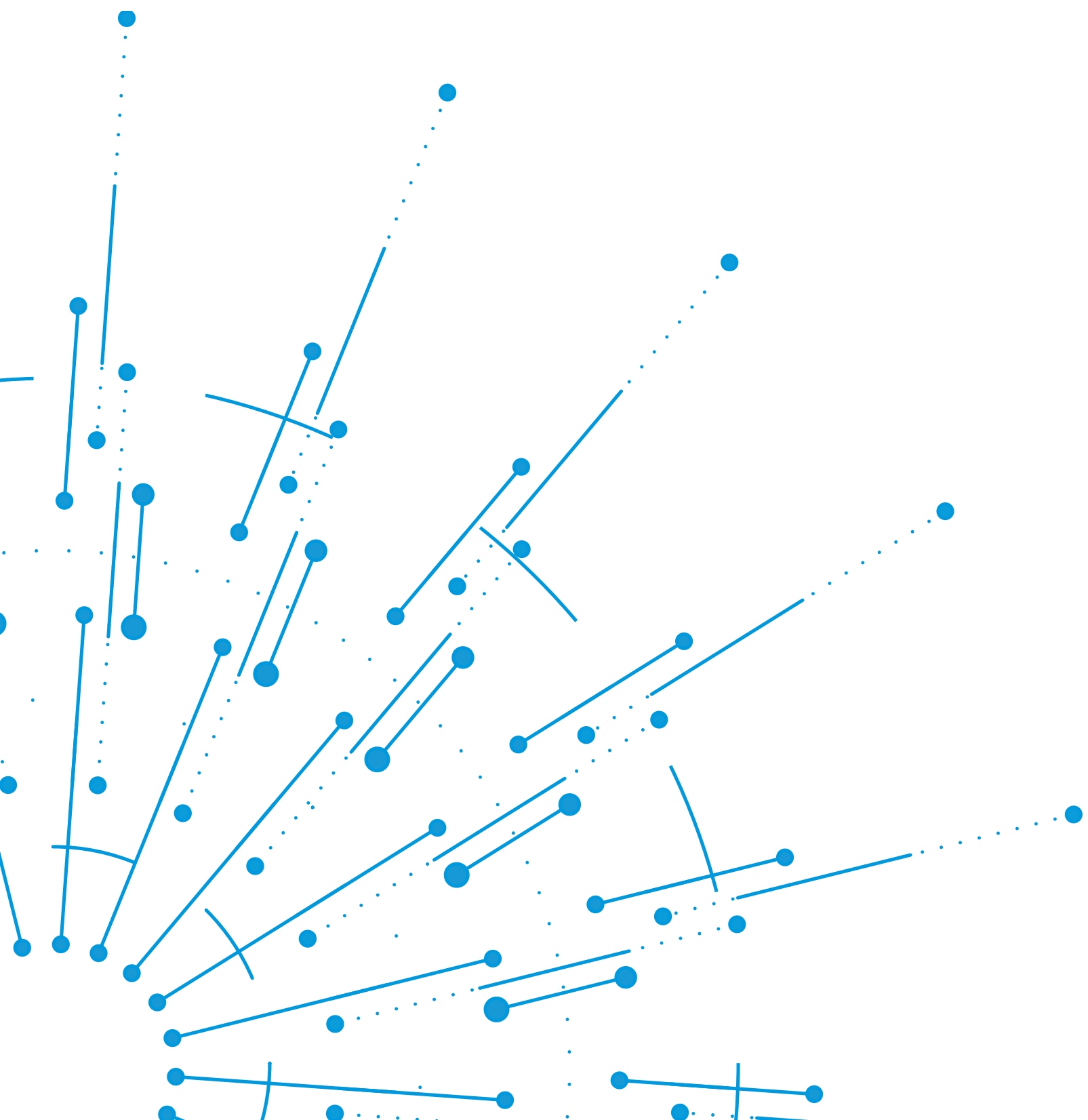
**Scope 3**  
Other Indirect Emissions  
99.46%



# Companies included in this initiative



**All companies generate emissions** (e.g., by purchasing electricity or driving vehicles) and we all have improvement areas in our daily operations where we can reduce our emissions and environmental impact.



# Renewable Energy



FOSSIL FUELS



BIOFUELS



NUCLEAR



RENEWABLE

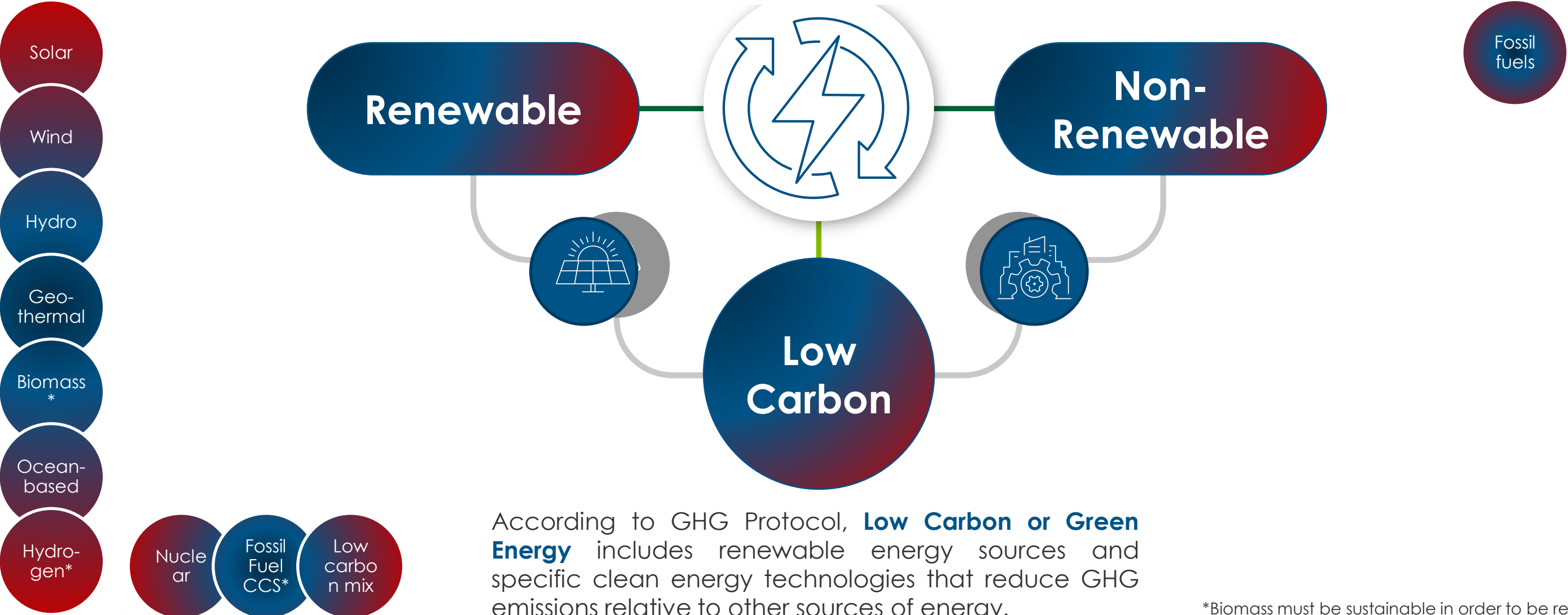


# Energy Specs

## Renewable, non-renewable and low carbon energy.

According to GHG Protocol, **renewable energy** are fuels and energy obtained from sources that are ultimately replenished from natural solar and gravitational energy flows.

**Non-renewable energy** are fuels and energy obtained from sources that will not be replenished in our lifetime.



According to GHG Protocol, **Low Carbon or Green Energy** includes renewable energy sources and specific clean energy technologies that reduce GHG emissions relative to other sources of energy.

\*Biomass must be sustainable in order to be renewable and/or low carbon  
\*Hydrogen must be obtained through renewable electricity  
\*Fossil fuels can be considered low carbon if a CCS (carbon capture and storage) is used



# Renewable Energy Concepts

## Energy Sources & Technologies

**Renewable sources** are the **primary form of energy**, with **technologies** energy is transformed to an **energy carrier**. Such as solar energy with solar panels can be transformed into electricity.

## Bundled and Unbundled Energy

**Bundled energy** powers our facilities, also provides a proof of RE and **unbundled energy** is a tracking system for environmental impact, meaning there is no consumption but there is credit for CO2 avoidance.

## Procurement Mechanisms

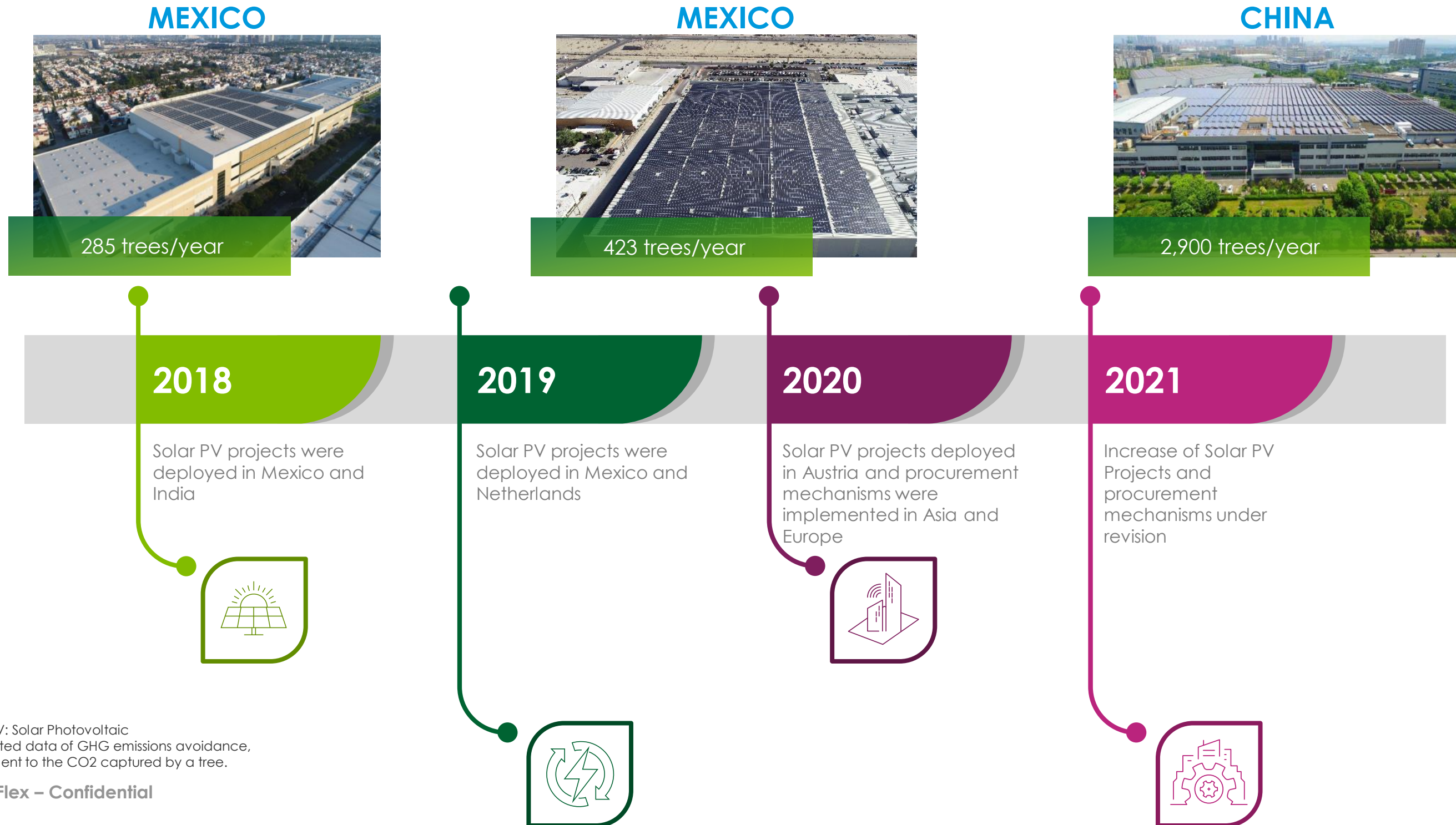
Mechanisms used to **procure bundled and unbundled energy in regulated and non-regulated energy markets**. Such as energy agreements, energy attribute certificates and supply agreements.

## Energy Models

Lineal regression used to determine energy consumption per part number.



# Flex's Renewable Energy Maturity



Solar PV: Solar Photovoltaic  
\*Estimated data of GHG emissions avoidance, equivalent to the CO2 captured by a tree.



# GHG Questionnaires Overview



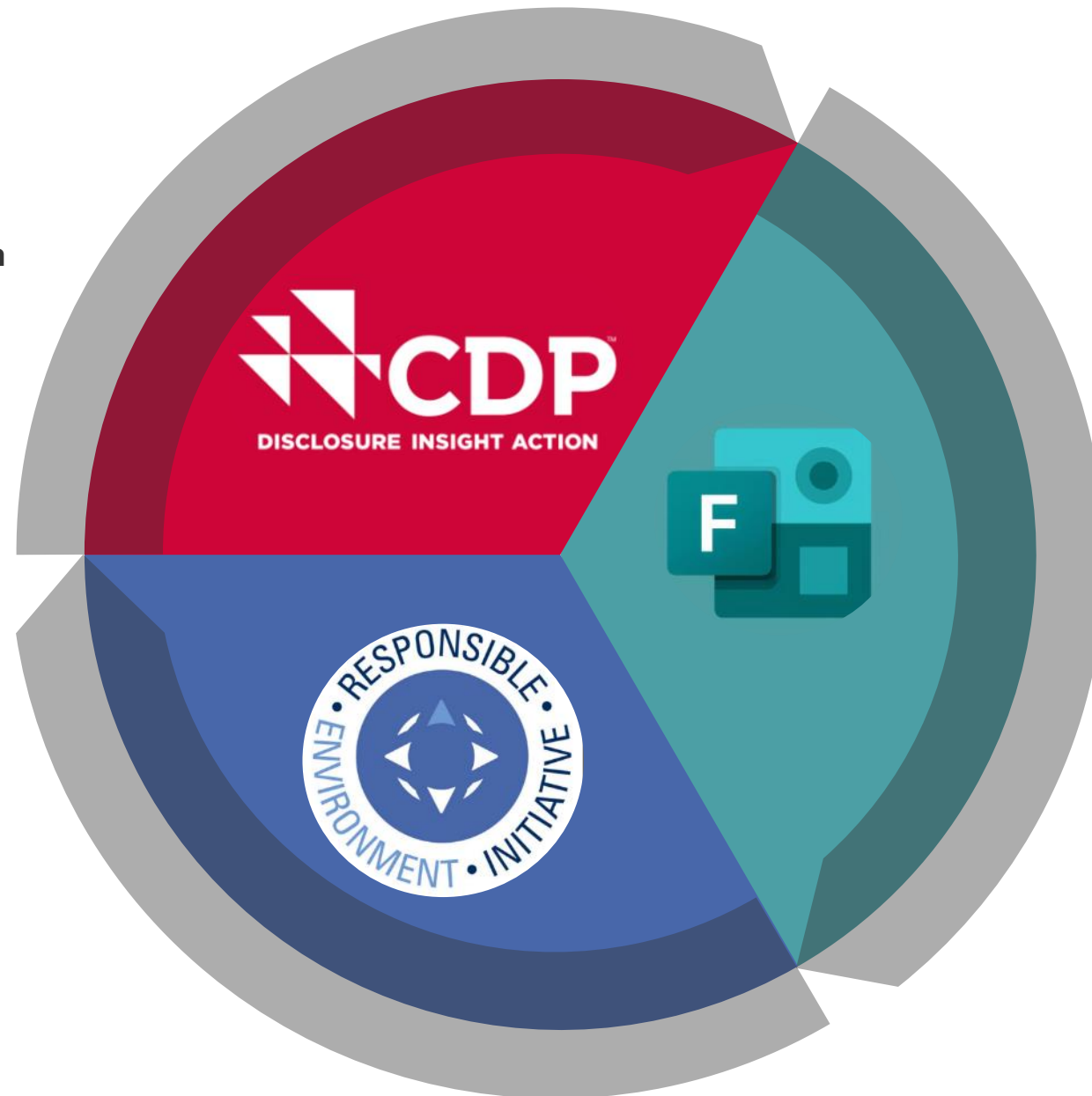
# 2024 GHG Questionnaires



## CDP QUESTIONNAIRE

Start date: June 4<sup>th</sup>

Deadline: September 18<sup>th</sup>



## FLEX - MS FORMS

Start date: June 4<sup>th</sup>

Deadline: September 18<sup>th</sup>

## RBA – EMISSIONS MANAGEMENT TOOL

Start date: April 29<sup>th</sup>

Deadline: August 1<sup>st</sup>

**Note: You only need to answer 1 questionnaire, that Flex will assign to you.**





Target Question

2023 Question #

2024 Question #

RBA EMT Section

MS Forms section

1 GHG Emissions reduction target(s)

C4.1.1, C4.1.2

7.53.1 and / or 7.53.2

[Targets]

[Section 3: GHG Emissions Reduction Targets]

2 Renewable energy target

C4.2.1

7.54.1

NA

[Section 5: Renewable Energy Targets]

3 Emissions reduction initiatives

C4.3

7.55, 7.55.1, 7.55.2

[Emissions initiatives]

[Section 6: Sustainability initiatives]

4 Methodology for emissions calculations

C5.3

7.2

[Company information]

[Section 2: GHG Emissions Data]

5 Base year information

C5.1, C5.2

7.5

[Company information]

[Section 3: GHG Emissions Reduction Targets]

6 Scope 1 emissions

C6.1

7.6

[Scope 1]

[Section 2: GHG Emissions Data]

7 Scope 2 Methodology (LB / MB)

C6.2

7.3

[Scope 2]

[Section 2: GHG Emissions Data]

8 Scope 2 Emissions

C6.3

7.7

[Scope 2]

[Section 2: GHG Emissions Data]

9 Scope 3 emissions (optional)

C6.5

7.8

[Scope 3]

[Section 2: GHG Emissions Data]

10 Renewable & Non renewable energy consumption and usage totals

C8.2a, C8.2b

7.30, 7.30.1, 7.30.6, 7.30.7

[Energy reporting]

[Section 4: Energy Data]

11 GHG Emissions allocation

SC1.1, SC1.2

7.26

NA

[Section 7: Emissions Allocation]



# Suppliers involved in the GHG program







# How to activate your GHG Questionnaire

# 2024 Questionnaire Setup

# Quick Tips for Getting Started



## Before you start:

- ▼ Allow emails from @cdp.net, disable popup blockers, optimized use in Google Chrome
- ▼ Visit: [www.cdp.net/guidance](http://www.cdp.net/guidance)
- ▼ Review questionnaires offline by downloading them in Microsoft Word or a PDF
- ▼ Review guidance and scoring methodology

## How to access:

- ▼ [Register a contact](#) on CDP's website
- ▼ Follow the activation link in the invitation from CDP
- ▼ [Login to CDP's website](#) and activate your questionnaires immediately
- ▼ If you have not received an email from CDP by end of April, contact the [CDP Help Center](#)
- ▼ Scoring Deadline: **September 18, 2024**



# Using CDP's Help Center



The screenshot shows the CDP Help Center homepage. At the top, there is a red navigation bar with the CDP logo, a home icon, links for 'Knowledge Base' and 'My Support', a search icon, a language dropdown set to 'English', and a user profile for 'Jeremy Edelman'. Below the navigation bar is a large banner with the text 'Welcome to the CDP Help Center' and 'Use the search bar to explore our knowledge articles and find instant answers to your questions'. A search bar is located below the banner, with a dropdown menu set to 'All' and a search icon. Below the search bar, there are three sections: 'Most Popular' with links for 'Questionnaire guidance for companies', 'Account user types', and 'CDP request for companies'; 'Most Popular Articles' with links for 'Questionnaire guidance for companies', 'Account user types', and 'CDP request for companies'; 'Most Recent Articles' with links for 'Questionnaire guidance for companies', 'Provide feedback to CDP', and 'Reporter Services'; and 'Top Rated Articles' with links for 'Questionnaire guidance for companies', 'New user access', and 'Responding as a self-selected company, city, state or region'. At the bottom, there is a footer with contact information for the support team.

Knowledge Base:  
Repository of self-help articles for immediate support

Support in multiple languages: English, Portuguese, Japanese, Chinese (Simplified), Spanish

"My Support" - once logged in, you can raise a ticket for CDP (will link to your account)

Popular articles

# Guidance and Support



Visit our online disclosure [guidance page](#):

Disclosure 2024 materials

Corporates



### CDP full corporate questionnaire and reporting guidance

View the full corporate questionnaire and reporting guidance for 2024.



### CDP full corporate questionnaire – Overview

Learn more about the structure of the full corporate questionnaire, the environmental issues covered, the sectoral approach, and more.



### Mapping IFRS-S2 to CDP questionnaire

A summary of connections between the 2024 CDP full questionnaire and the IFRS S2 standard.

Jump to...

Respond to investors and customers

Disclosure 2024 materials

- Corporates

- Small and Medium-sized Enterprises (SMEs)

Key CDP technical materials

Scoring materials

Previous cycle materials (2023)

Further resources

Give feedback

Hub for all available guidance documents.

# Register a Contact with CDP: Register to Disclose form



[Register to Disclose form link](#)

**Personal details**  
We'll use these details to communicate with you.

First Name \*  Last Name \*

Email \*

Preferred Language \*

**Organization**  
We'll identify your organization using these details.

Organization type \*  **'Company' in organization type**

Country of headquarters \*

Organization search  **Search for your organization in this field. Be sure the proper country is selected above.**

Organization name

Organization name in preferred language

Main website URL \*

Reason for registering \*  **'My organization has been requested to disclose'**

**Organization address**  
Enter the address your company lists as its global headquarters.

Address Line 1 \*

Address Line 2

City \*

State or Region

Zip/Postal Code \*

If your organization is not found in the "Organization search", add it manually here using the legal organization name ("Example Corporation" or "Example, Inc." rather than "Example")



## Set up your CDP questionnaire

These introductory questions help us customize the questionnaire for your organization.

**Note:**

- Your answers here will not be publicly disclosed, even if you choose to make the rest of your CDP response public;
- These questions are not part of your final submission;
- You can change your answers at any time until you submit your final CDP response;
- If you change your answers, the sections in your CDP questionnaire may change too.

The questions cover the following topics. Some may not be presented to your organization:

About your organization

---

Activity classification

---

Assessment of environmental issues

---

Intent to submit

---

Additional information

---

[Start questionnaire setup](#)



About your organization

## Your organization's questionnaire

CDP acknowledges that Small and Medium-sized Enterprises (SMEs) may have different reporting capabilities and requirements compared to larger companies. For this reason, CDP has two corporate questionnaires:

- The **full corporate questionnaire** is suitable for large companies and organizations, and includes sector-specific datapoints.
- The **SME corporate questionnaire** is tailored to the needs of SMEs and contains fewer, simplified datapoints. Only organizations which meet CDP's **SME eligibility threshold** may complete the SME questionnaire.

Based on your organization's revenue and total number of employees, you are eligible and recommended to complete the SME questionnaire.

- We intend to complete the SME questionnaire, as recommended.
- We intend to complete the full corporate questionnaire.

Info

By default, the recommended version is already selected

Previous

Next



< Home



The revenue percentages you entered do not add up to 100%. Check the numbers you entered are correct.

Activity classification

What were your organization's business activities according to CDP-ACS?

During a single reporting year, organizations may get revenue from many activities. CDP-ACS is our Activity Classification System: a three-tiered system made up of Industry, Activity Group and Activity. It takes into account the diverse activities from which companies earn revenue, and associates them with relevant environmental issues. Read more about CDP-ACS.

We use this information to add sector-specific questions based on the allocations at the end of the page. If you are eligible for CDP scoring, you will only be scored on your primary questionnaire sector.

To discuss changing your CDP-ACS sector allocations, contact CDP for support.

Table with 6 columns: Grade, CDP Industry, CDP Activity Group, CDP Activity, Questionnaire sector, % annual revenue associated with activity. Contains 3 rows of data with error messages for the percentage fields.

Primary questionnaire sector: General

Additional questionnaire sector allocation(s): Agricultural commodities, Metals & mining, Steel

Previous Next







**Intent to submit**

## Request to disclose on climate change

All organizations disclosing to CDP will be asked questions relating to climate change. By proceeding to the next page, you confirm that your organization intends to submit information on climate change.

If you do not intend to progress to the questionnaire and submit data relating to climate change, CDP will consider this as non-disclosure. Read [CDP's scoring approach to non-disclosure](#).

### The positive impact of reporting climate-related data

By sharing information on your organization with CDP, you're helping to solve our planet's biggest environmental challenges: climate change.

### Climate-related data drives organizational change

Improving corporate awareness through measurement and disclosure is essential to managing climate change risk. Since its launch in 2002, CDP's data and insights have helped thousands of organizations measure their impacts, set ambitious targets, and demonstrate progress for key stakeholders.

### You're in good company


In 2024, more than 700 Capital Market Signatories representing over US\$142 trillion in assets, supported CDP's Letter requesting environmental information from more than 30,000 companies worldwide. CDP collects environmental data from 330+ major purchasers with over US\$6.4 trillion in procurement spend.


Previous


Next




< Home Last saved: 16/09/2023, 17:11 PM

  
Submission lead confirmed

  
Manage your requests

  
Complete questionnaire setup

  
Choose your fee option

---

## Thank you

Click "Finish setup" to submit your answers. We will automatically set up your CDP questionnaire.

You can change your answers at any time. However, any significant changes may alter the questions in your questionnaire.

[Finish setup](#)

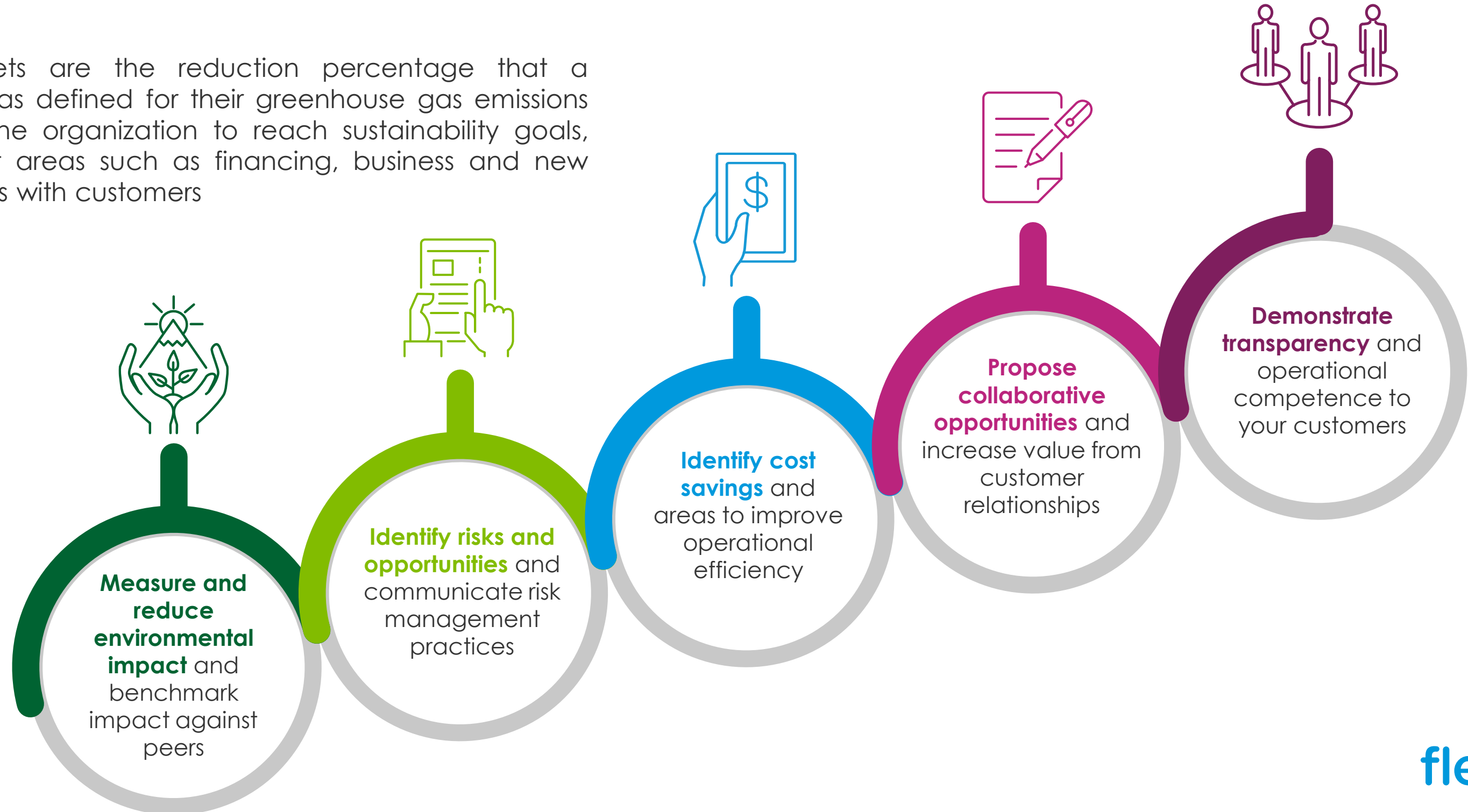


# Relevance & Impact



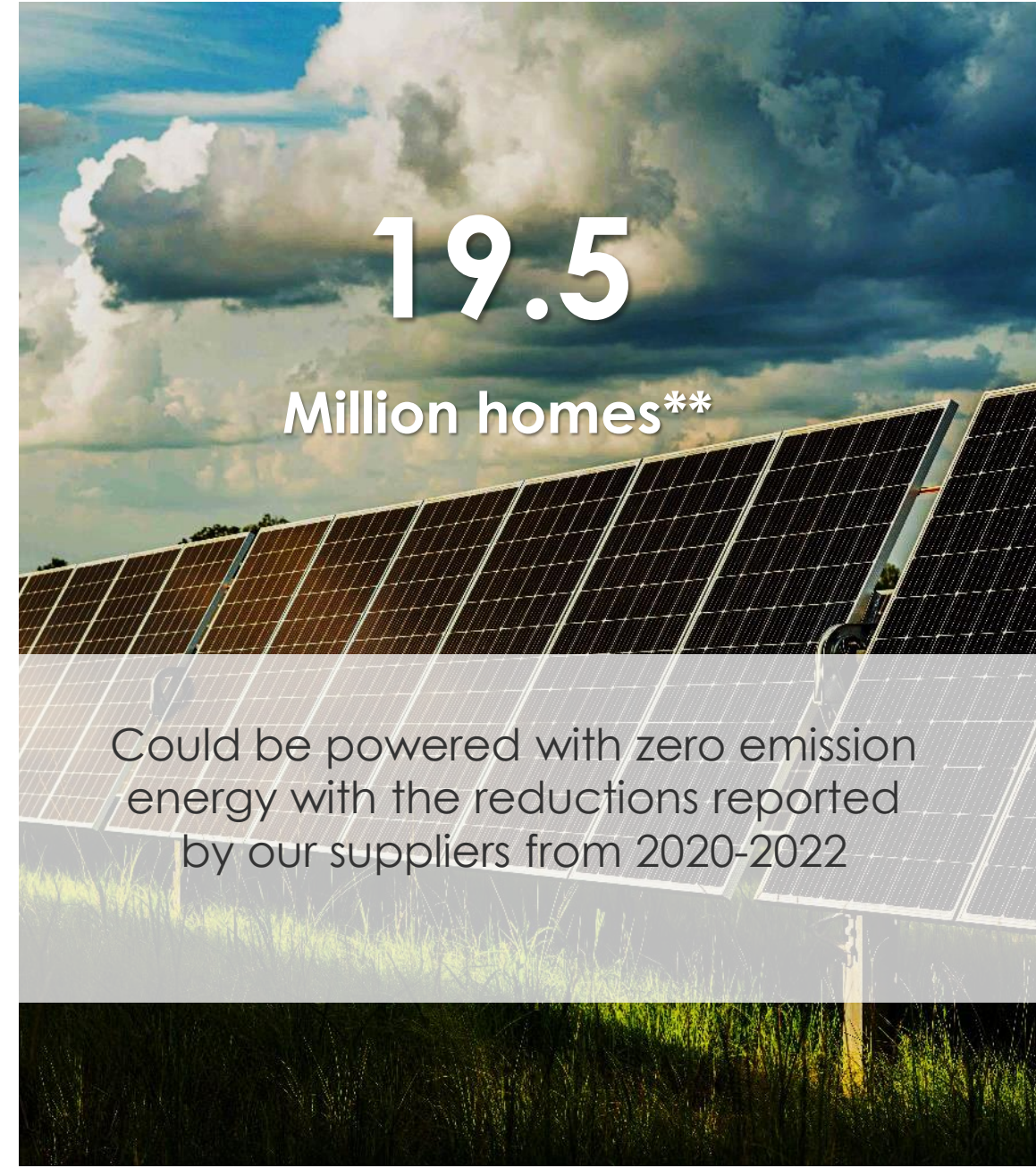
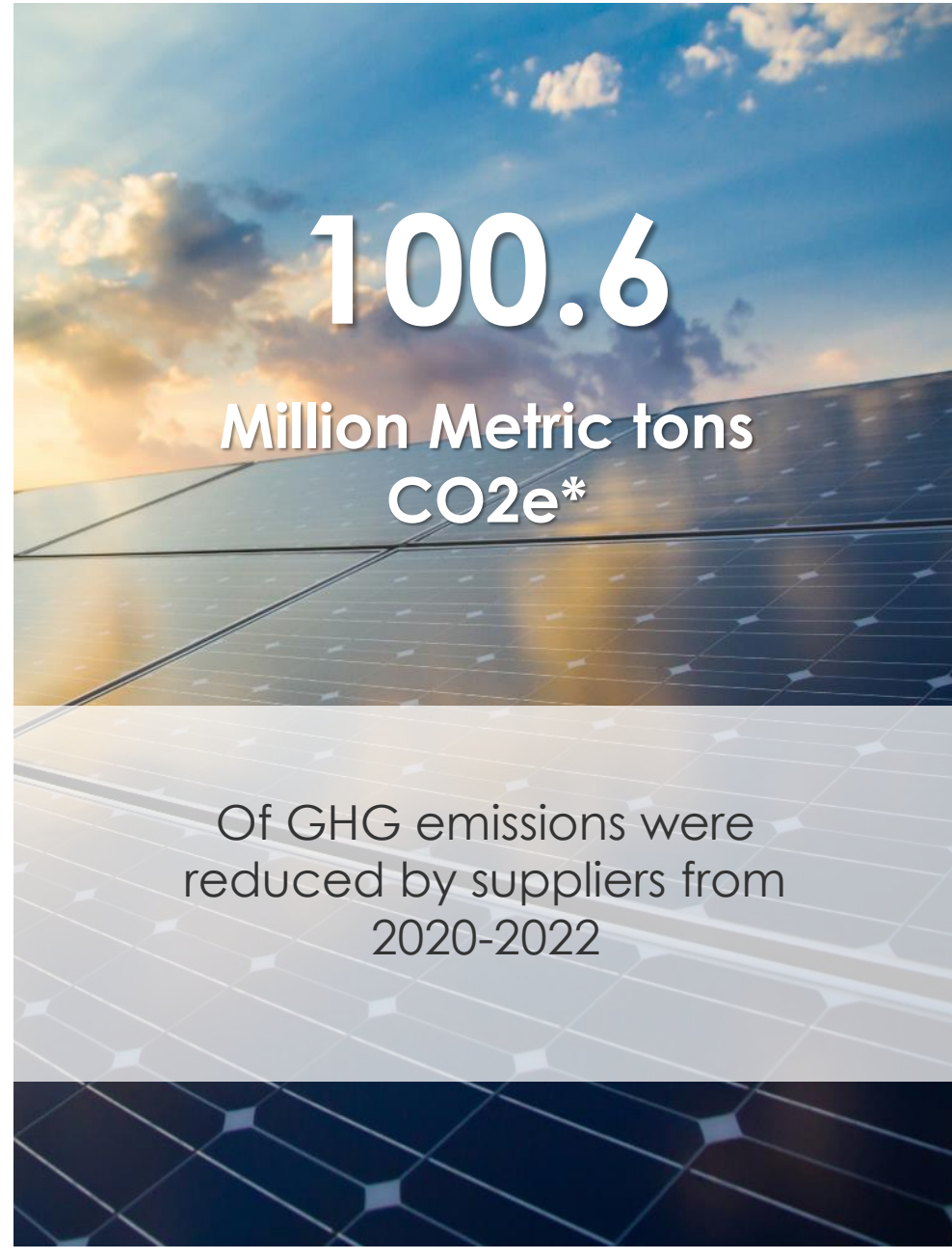
# Importance of setting emissions reduction targets

These targets are the reduction percentage that a company has defined for their greenhouse gas emissions they help the organization to reach sustainability goals, and impact areas such as financing, business and new opportunities with customers



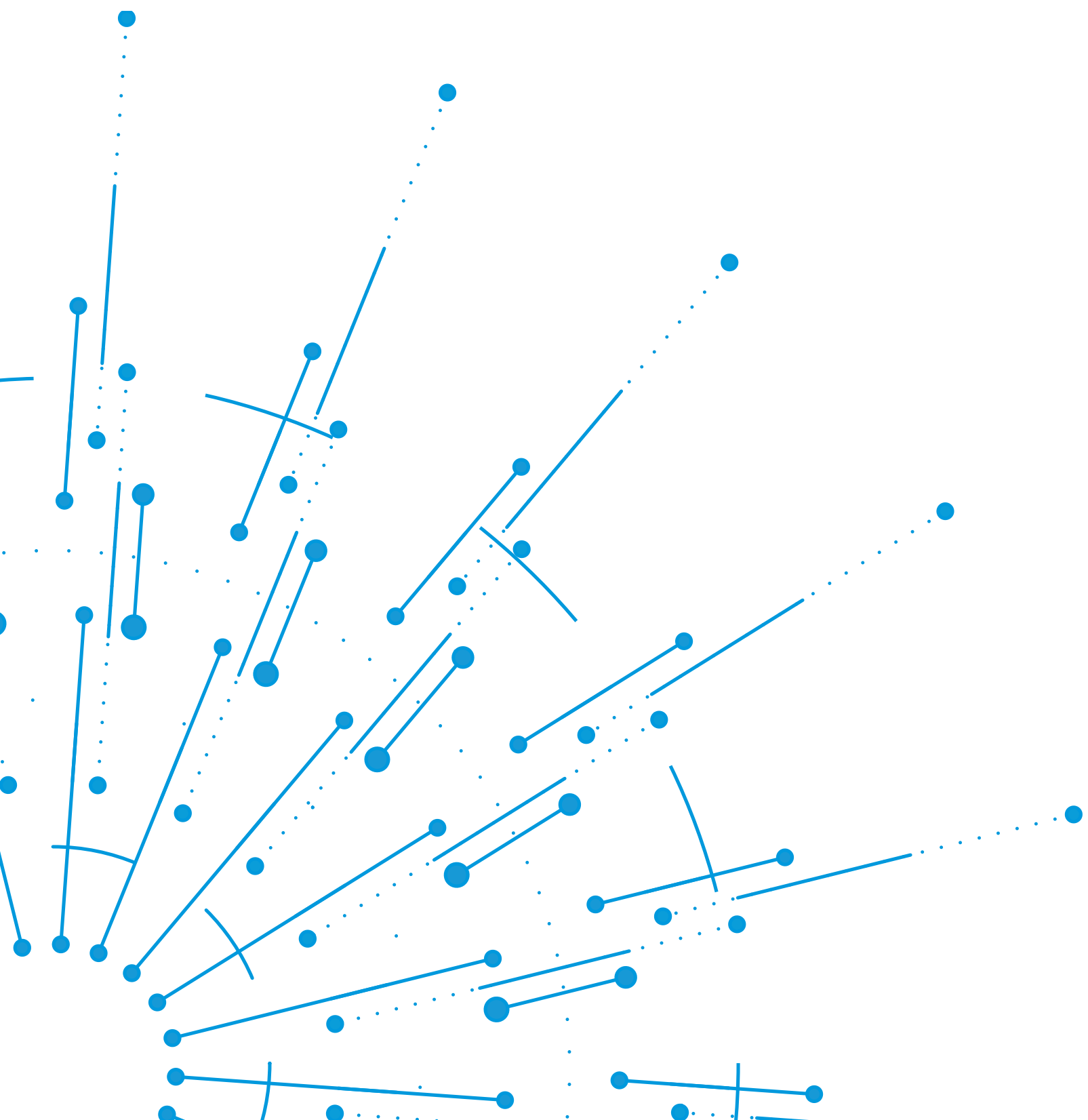


# GHG Program Preferred Suppliers' Impact



\*As reported by Flex suppliers on CDP from 2021 to 2023  
3 \*\*With the contribution of 330 watts peak

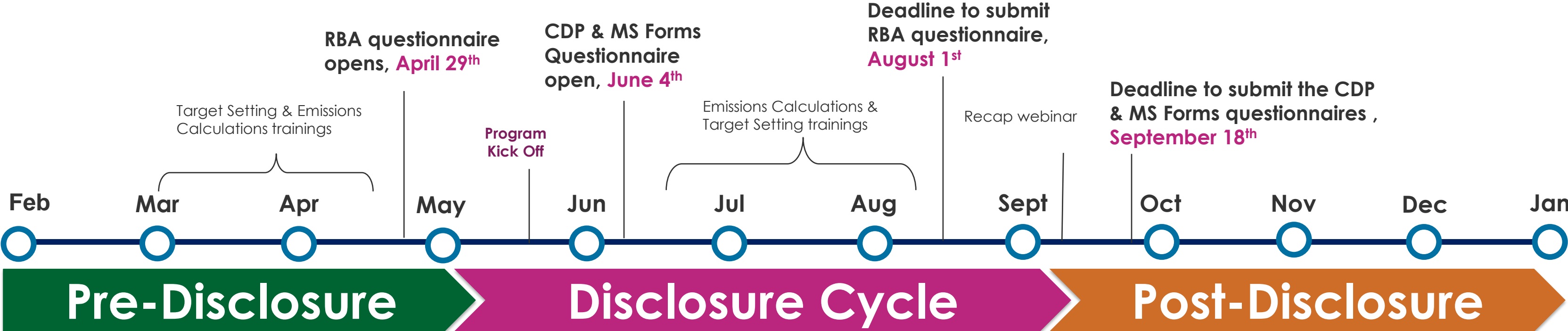




# 2024 Timeline & Preparation



# 2024 GHG Program Timeline



Flex invitation to suppliers

Supplier fill-in and submit the questionnaire  
Webinars from Flex to support suppliers in their disclosure

- Discuss results with suppliers and send feedback, and hold suppliers accountable for on-going improvement
- Work with suppliers to explore collaborative opportunities
- Suppliers continue their environmental journey

**Webinar dates:**

- Target Setting:  
AME & EU: March 12<sup>th</sup>  
Asia EN: March 13<sup>th</sup>  
Asia CH: March 14<sup>th</sup>

- Kick-off:  
AME & EU: May 21<sup>th</sup>  
Asia EN: May 22<sup>th</sup>  
Asia CH: May 23<sup>th</sup>

- Target Setting:  
1<sup>st</sup> AME & EU: July 16<sup>th</sup>  
1<sup>st</sup> Asia EN: July 17<sup>th</sup>  
1<sup>st</sup> Asia CH: July 18<sup>th</sup>

- Recap:  
AME & EU: September 3<sup>rd</sup>  
Asia EN: September 4<sup>th</sup>  
Asia CH: September 5<sup>th</sup>

- GHG Emissions:  
1<sup>st</sup> AME & EU: April 16<sup>th</sup>  
1<sup>st</sup> Asia EN: April 17<sup>th</sup>  
1<sup>st</sup> Asia CH: April 18<sup>th</sup>

- GHG Emissions:  
2<sup>nd</sup> AME & EU: June 18<sup>th</sup>  
2<sup>nd</sup> Asia EN: June 19<sup>th</sup>  
2<sup>nd</sup> Asia CH: June 20<sup>th</sup>

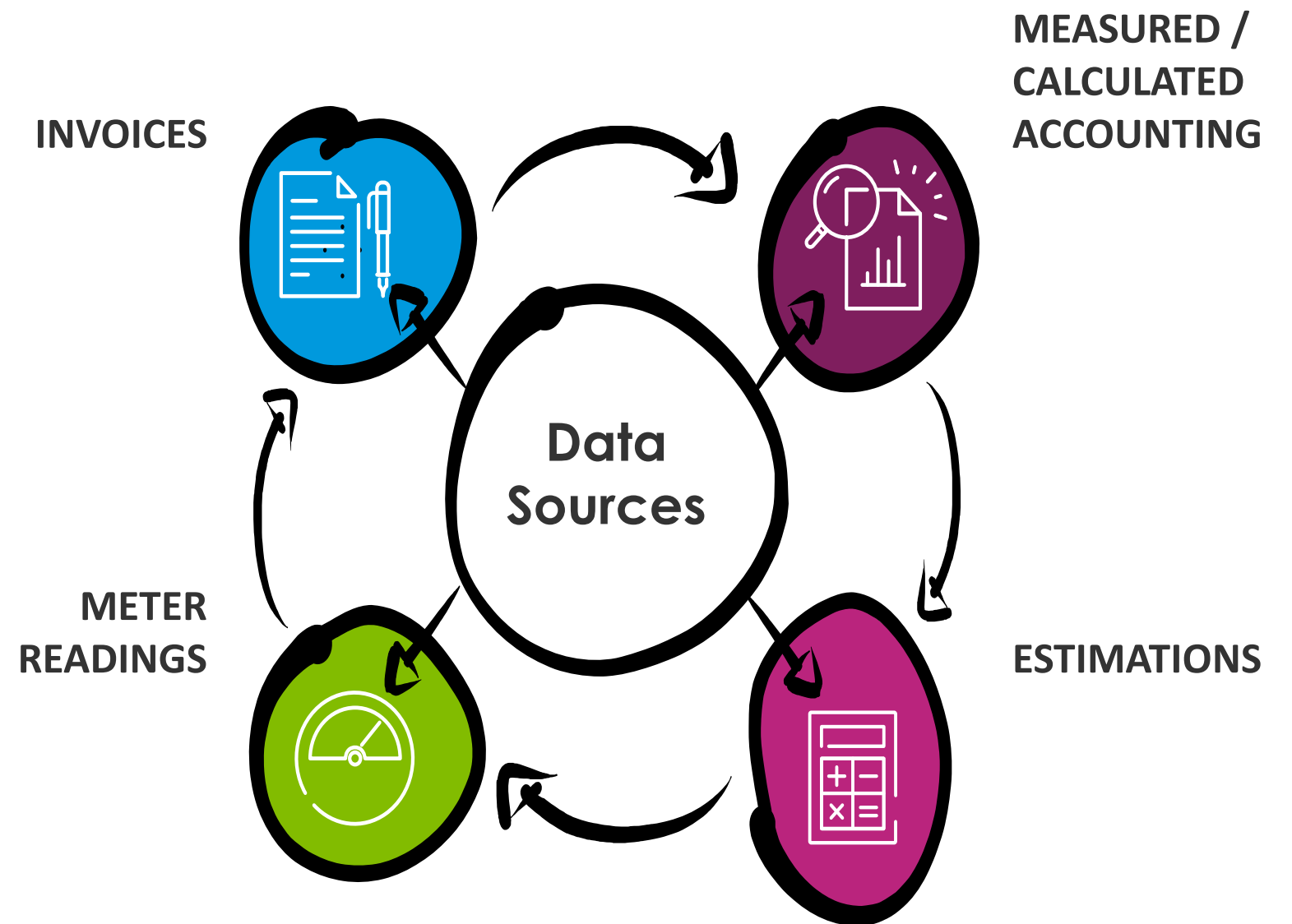
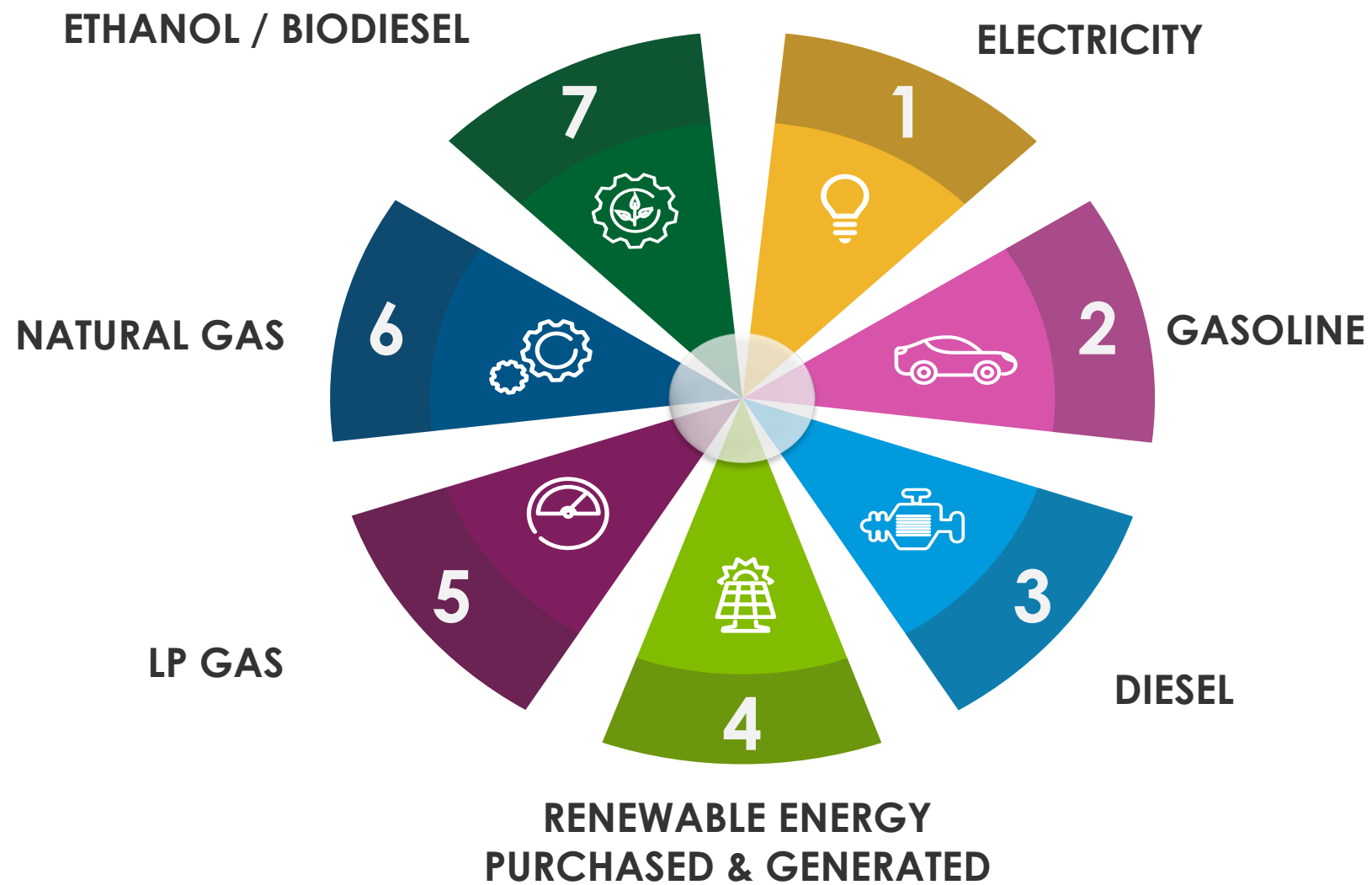
- On-Site trainings:  
Guadalajara, México: July 9<sup>th</sup>  
Shenzhen, China: July 11<sup>th</sup>

- GHG Emissions:  
3<sup>rd</sup> AME-EU: August 13<sup>th</sup>  
3<sup>rd</sup> Asia EN: August 14<sup>th</sup>  
3<sup>rd</sup> Asia CH: August 15<sup>th</sup>

- Personalized sessions  
During all disclosure cycle

# What you will need to calculate your GHG Emissions

You need to collect data for the following direct and indirect **energy sources** that may apply to your company:



# Calculation tools

Here you can find some recommended files for further information and to assist you in your GHG emission calculations and Renewable energy calculations:



2024 GHG emissions tool  
V1.4.0.xlsx



GHG Emissions tool  
2024 - Quick  
guide.pdf

Disclaimer: Flex gives no warranty and accepts no responsibility or liability for i) errors or omissions in the content; ii) the accuracy or the completeness of the information and materials; and iii) any calculations, results or information derived from the use of any information contained in this document. Under no circumstance will Flex be held liable in any way for any claim, damages, losses, expenses, costs or liabilities whatsoever (including, without limitation, any direct or indirect damages for loss of profits, business interruption or information) resulting or arising directly or indirectly from the use of or inability to use this document, or reliance on the information and materials on this document. Flex has exercised reasonable efforts to include accurate and up to date information












## 2024 On-site trainings

As part of our supplier's training strategies, we will be conducting 2 on-site trainings in Guadalajara, México (in Spanish) and Shenzhen, China (in Chinese) for our suppliers that are located in these regions.

We will be covering all the following topics so you can have the resources and information available in order to properly disclose your information:

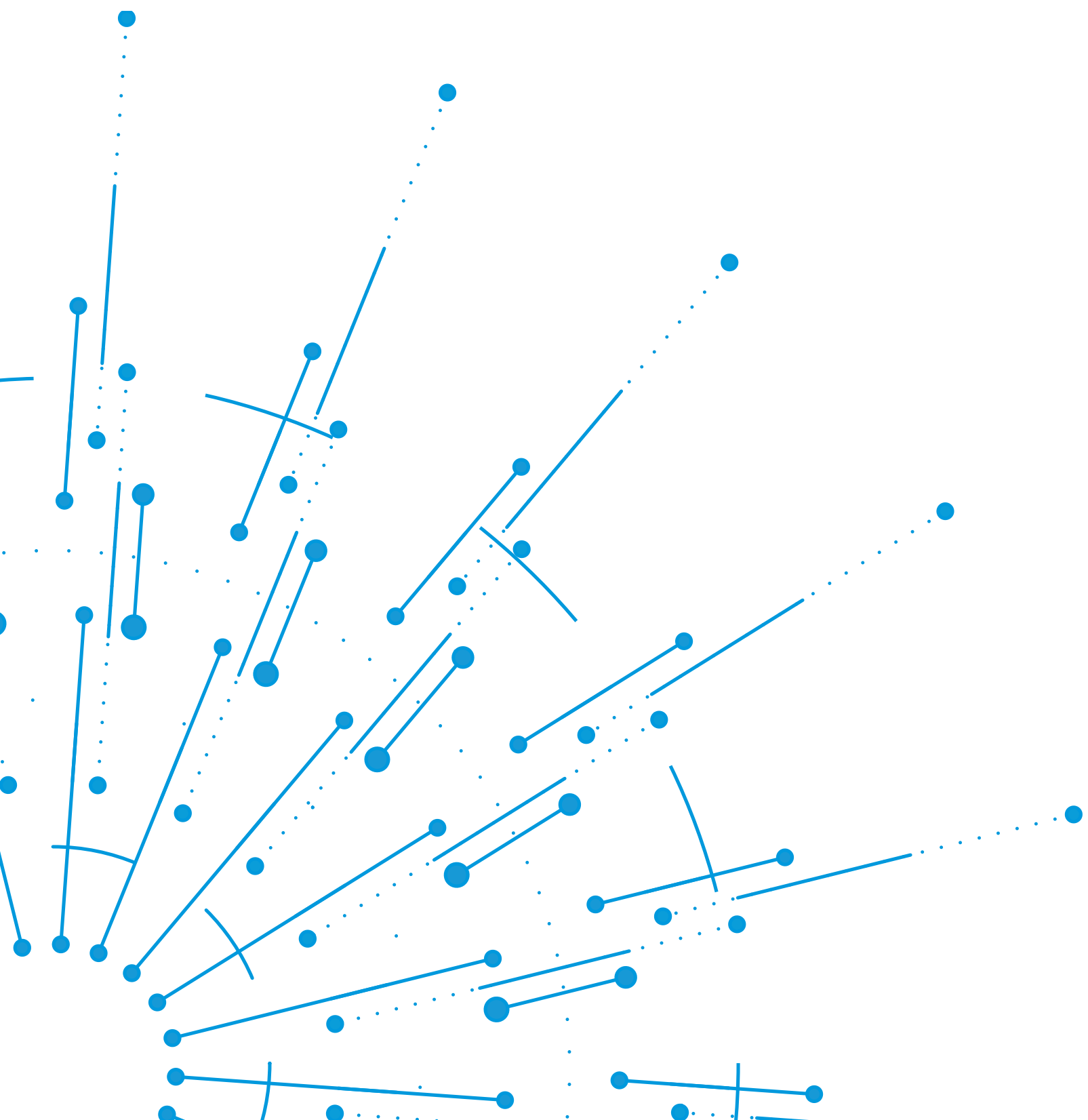


- GHG emissions and renewable energy general concepts
- How to calculate your emissions and energy consumptions
- How to set emissions reduction targets
- GHG Questionnaire

This face-to-face training session will be conducted in:

- **Guadalajara North site (Zapopan, México) on July 9<sup>th</sup>, 2024**
- **Fuyong Site (Shenzhen, China) on July 11<sup>th</sup>, 2024**





# FAQs and Resources

# Frequently asked questions



- **Do we need to answer the 3 questionnaires?**

You only need to answer 1 questionnaire, that Flex will assign to you.

- **What if I didn't receive my registration email from Flex?**

Please search in your spam/junk folder for the email from **@flex.com** domain, if you don't find it, please contact [flex.GPSC@flex.com](mailto:flex.GPSC@flex.com) in order to receive support.

- **If we have multiple sites, multiple business entities across the world do we have to roll the data up to the overall parent company or keep results at a local site level?**

Best practice in corporate GHG accounting encourages all companies to be reporting enterprise-data at the ultimate parent company level. Doing so avoids double counting and reduces reporting effort.

However, if you have more granular information on your emissions (like site level data or product level data) CDP and RBA questionnaires offer this option, and we encourage you to do so.

**Please note that it is not possible to access the questionnaires through the Internet Explorer browser. Please, consider using another browser to disclose through our platform.**

# Further useful resources

## Resources for Disclosure:

- ▼ [CDP Guidance for Companies](#)
- ▼ [CDP FAQs – Find answers to common queries](#)
- ▼ [CDP Supply Chain Report: Changing the Chain](#)
- ▼ [CDP-ACS: Guidance for Company Classification](#)
- ▼ [Working 9-5: A guide for Small Office Based Organizations'](#)
- ▼ [Hot Climate, Cool Commerce: A Service Sector Guide to Greenhouse Gas Management](#)
- ▼ [CDP On-Demand Technical Support:](#)  
For all geographic regions, contact <https://casemgmt-crm.cdp.net/>
- ▼ [RBA EMT website:](#)  
[RBA Sharefile → FAQs, Survey Guide and more](#)  
[RBA's upcoming webinars](#)  
[RBA information about EMT](#)

## GHG Emissions Accounting and Science-Based Targets:

- ▼ [GHG Protocol Corporate Standard](#)
- ▼ [GHG Protocol Calculation Tools](#)
- ▼ [CDP Technical Note on Science-Based Targets](#)
- ▼ [FAQs- The Science Based Targets Initiative](#)

## [Flex's Supply Chain Sustainability Resource Webpage](#)

**If you require support from Flex, please send us an email to:**

- ✓ [Flex GPSC Sustainability \(flex.gpsc@flex.com\)](mailto:flex.gpsc@flex.com)
- ✓ Contact your GCM



If you require support from Flex,  
please send us an email to:

- ✓ [Flex GPSC Sustainability](mailto:flex.gpsc@flex.com) (flex.gpsc@flex.com)
- ✓ Contact your GCM

Please help us improve by answering a **quick survey**  
that will launch after the webinar

Supplier training survey:





flex®

**Thank you**

